

FANEX 833 T

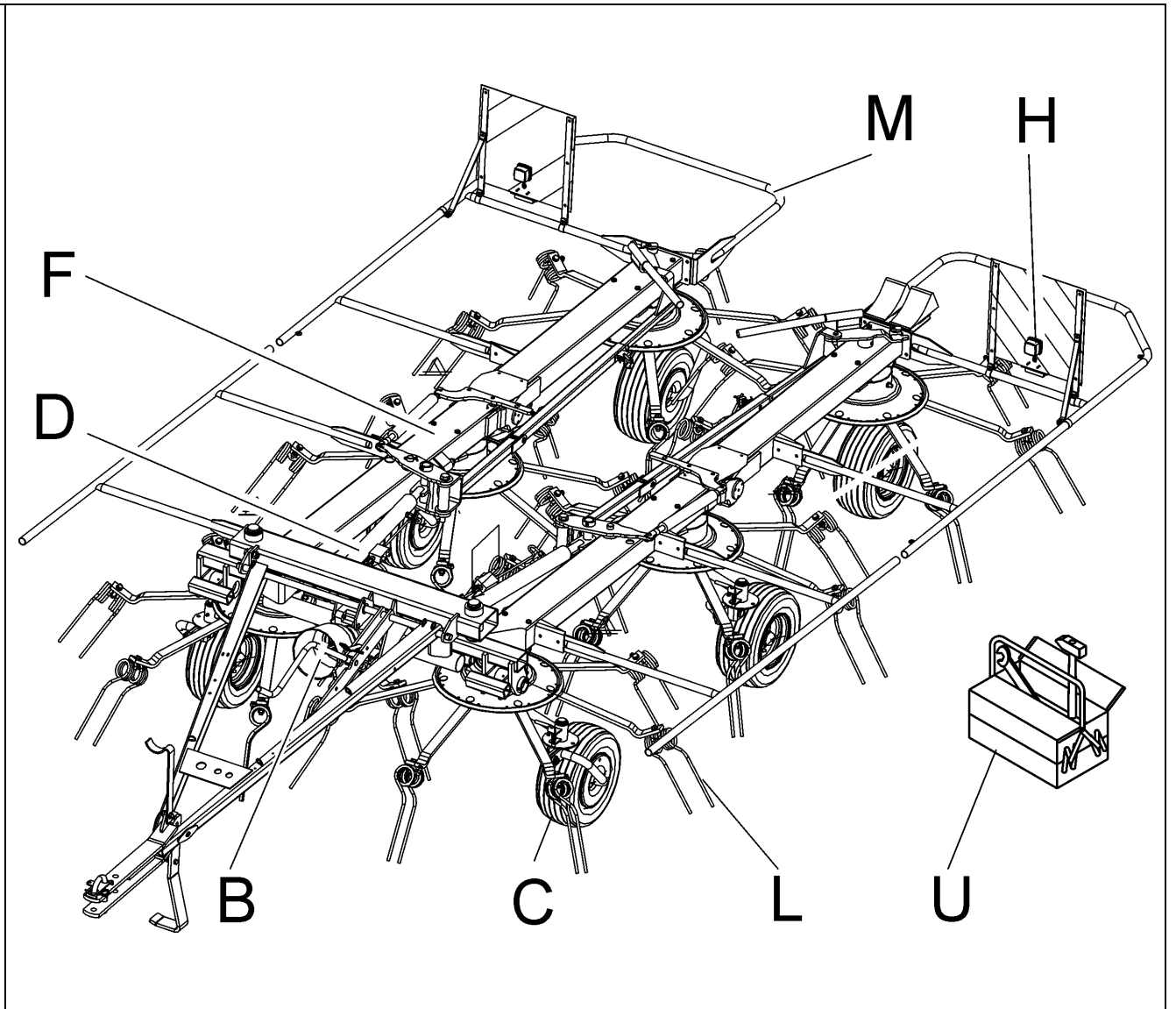
Spare Parts Manual

Article number: VF16644722
Language: EN
Production year (from): 2003
Prod. Series nr (from): 6918
0171 < Mach. ID <=

FANEX 833 T / Table of Contents



PosNo.	Assembly group	Page
B	MIDDLE GEAR BOX	1
B	CIRCLE GEAR BOX	2
B	DRIVE SHAFT	3
B	SIMPLE JOINT WALTERSCHEID	4
B	WINDROWING GEAR W	5
B	GEAR BOX W	6
B	UNIV.PROP.SHAFT LZ=1260 1100 NM -515	7
B	JOINT SHAFT WALTERSCHEID LZ=1510 1100 NM -515	8
B	SAFETY CLUTCH M 1100 NM WALTERSCHEID	9
B	JOINT SHAFT WALTERSCHEID LZ=1510 1100NM +516	10
B	OVERRUNNING CLUTCH	11
B	KEY-TYPE OVERRUNNING CLUTCH	12
C	WHEEL AXLE	13
C	PIVOT PIN	14
C	TRACK ROD	15
C	TYRES 16 X 6,5 X 8	16
D	HYDR.DEVICE WITH DIVIDER (+1081)	17
D	HYDRAULIC DEVICE	18
F	CENTRAL MACHINE	19
F	SIDE MACHINE INSIDE	20
F	LATERAL MACHINE	21
F	DRAWBAR WITH ACCESS.	22
H	LIGHTING SYSTEM	23
L	ROTARY HUB WITH ARM	24
M	PROTECTION DEVICE	25
M	PROTECTION BAR (+1081)	26
M	WARNING PLATE	27
U	DECAL PAINT	28



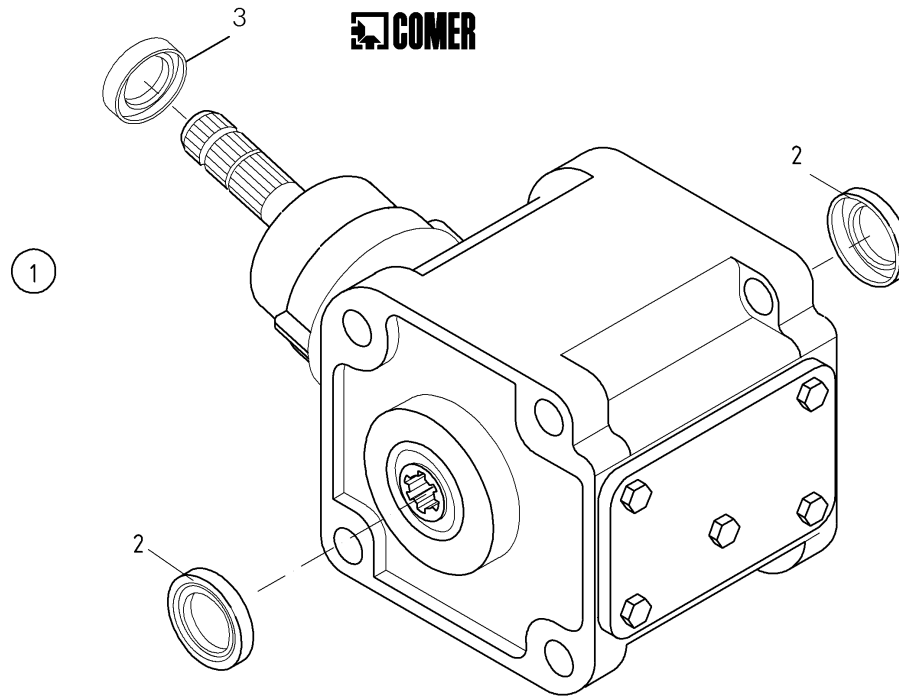
FANEX 833 T / middle gear box



B01



1,2 l SAE90 API-GL-4



1.002955.00

CM-MTGT2

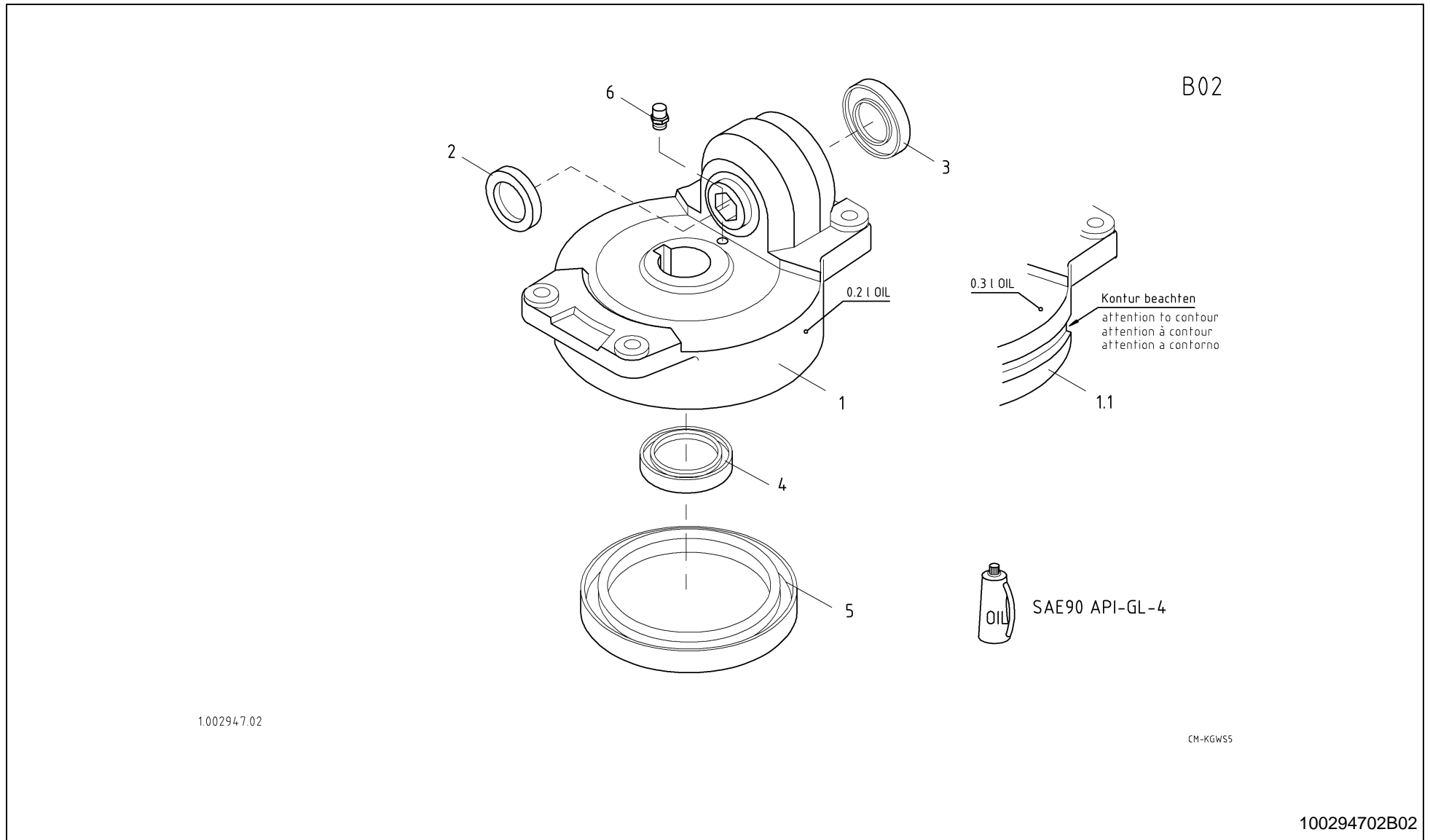
100295500B01



FANEX 833 T / middle gear box

PosNo.	Part No.	Qty.	Description	Remark
1	VF16623072.86	1	MIDDLE GEAR BOX	
2	KG00160200	2	RADIAL SHAFT SEAL - AS 40X80X10	
3	VF16606165	1	SEAL RING	

FANEX 833 T / circle gear box



1.002947.02

CM-KGWSS

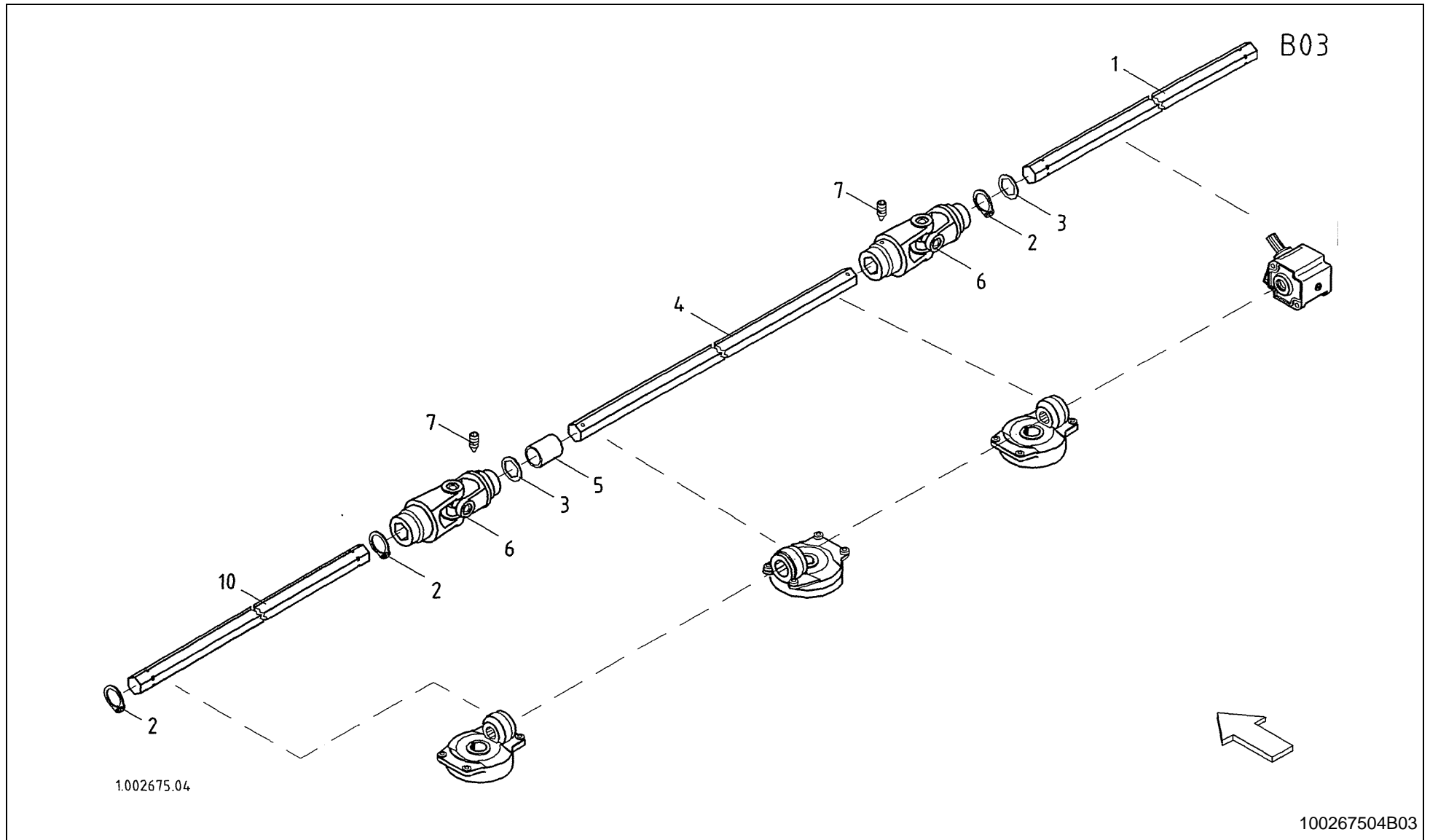
100294702B02



FANEX 833 T / circle gear box

PosNo.	Part No.	Qty.	Description	Remark
1	VF16623075.86	6	CIRCLE GEAR BOX	
1.1	VF16622113.86	6	CIRCLE GEAR BOX	+466 -475 +490 -515
2	KG00160600	1	RADIAL SHAFT SEAL - AS 45X62X8	X1
2.1	KG00122100	1	RADIAL SHAFT SEAL - AS 40X52X7	X 1.1
3	KG00126400	1	RADIAL SHAFT SEAL - AS 65X100X10	X1
3.1	KG00126400	1	RADIAL SHAFT SEAL - AS 65X100X10	X 1.1
4	VF16622996	1	SEAL RING	X1
4.1	KG00026600	1	RADIAL SHAFT SEAL - A 65X95X10	X 1.1
5	VF16622997	1	SEAL RING	X1
5.1	KG00135800	1	RADIAL SHAFT SEAL - AS 160X190X15	X 1.1
6	VF16642167	1	VALVE	X1

FANEX 833 T / drive shaft

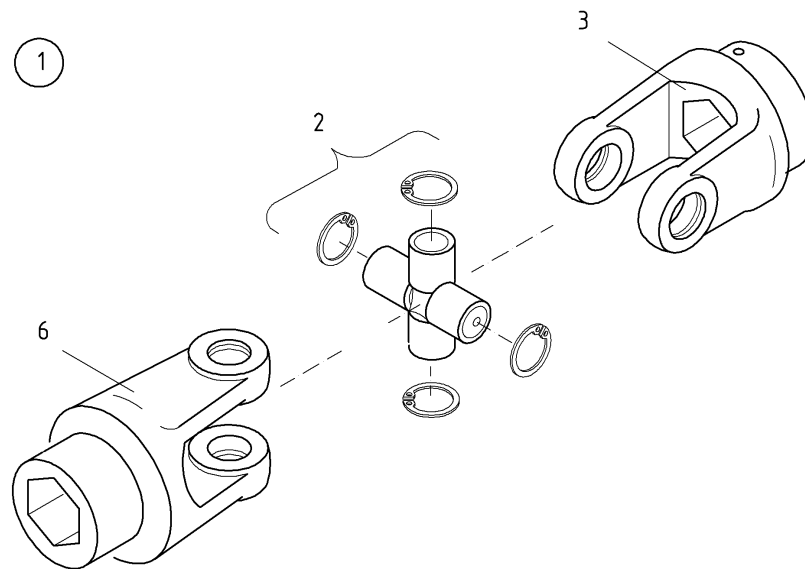




FANEX 833 T / drive shaft

PosNo.	Part No.	Qty.	Description	Remark
1	VF16643708	1	TRANSVERS.SHAFT MID.	
2	KG01099000	6	CIRCLIP-A 30 X 2	
3	VF16607327	6	WASHER	
4	VF16640283	2	TRANSVERS.SHAFT MID.	
5	VF16640285	2	SPACER	
6	VF16624050	4	SIMPLE JOINT	-385/take care f.replacement of pairs!
6	VF16641586	4	UNIVERSAL JOINT	+386
7	VF16640394	4	GRUP SCREW	
10	VF16640284	2	TRANSVERS.SHAFT OUTS	

B04



1.002712.02

CM-GELK

100271202B04

FANEX 833 T / simple joint Walterscheid

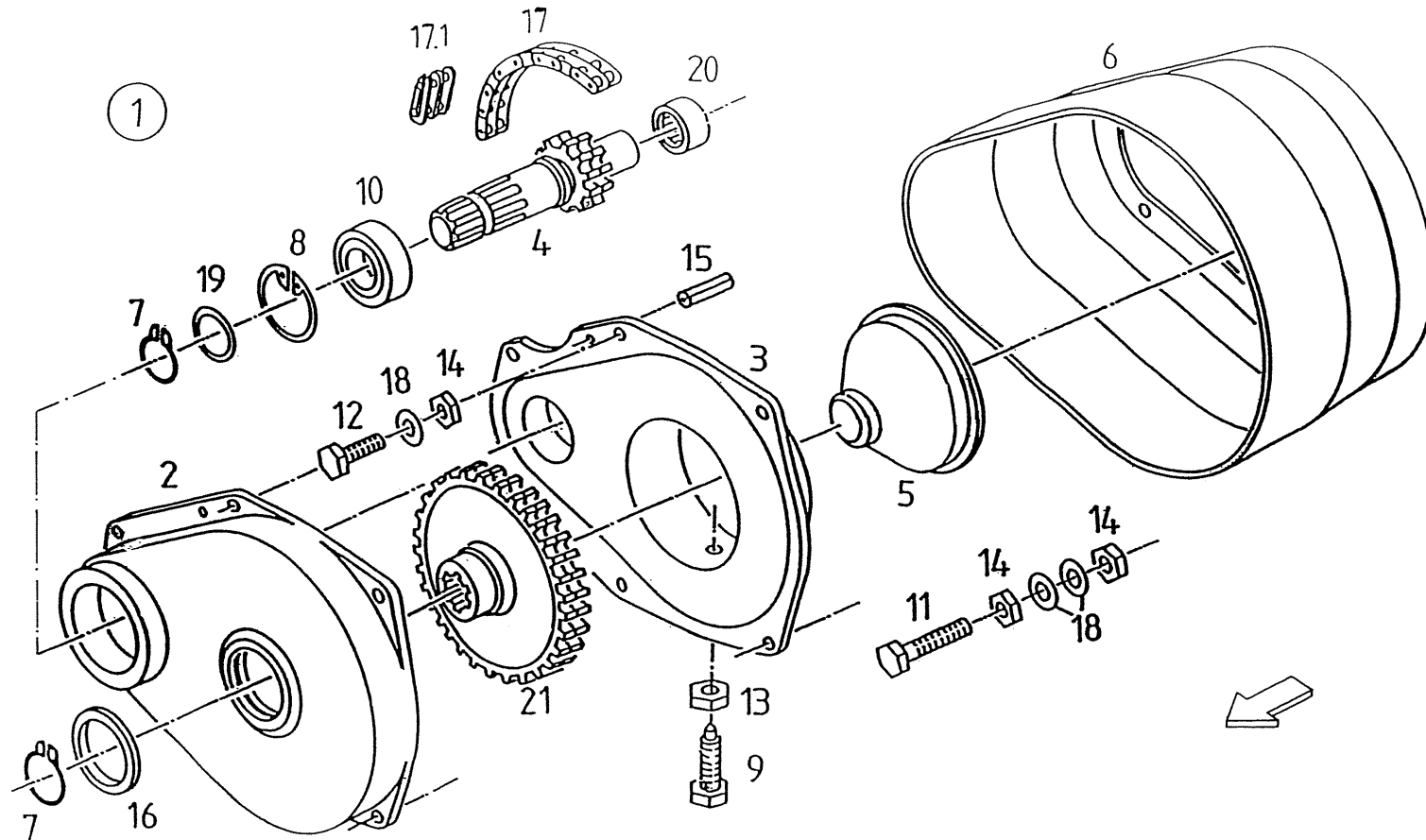


PosNo.	Part No.	Qty.	Description	Remark
1	VF16641586	4	UNIVERSAL JOINT	B B03
2	VF16624984	4	JOINT CROSS	
3	VF16624983	4	FORK	
6	VF16608451	4	FORK	

FANEX 833 T / windrowing gear W



B06



1.000063.02

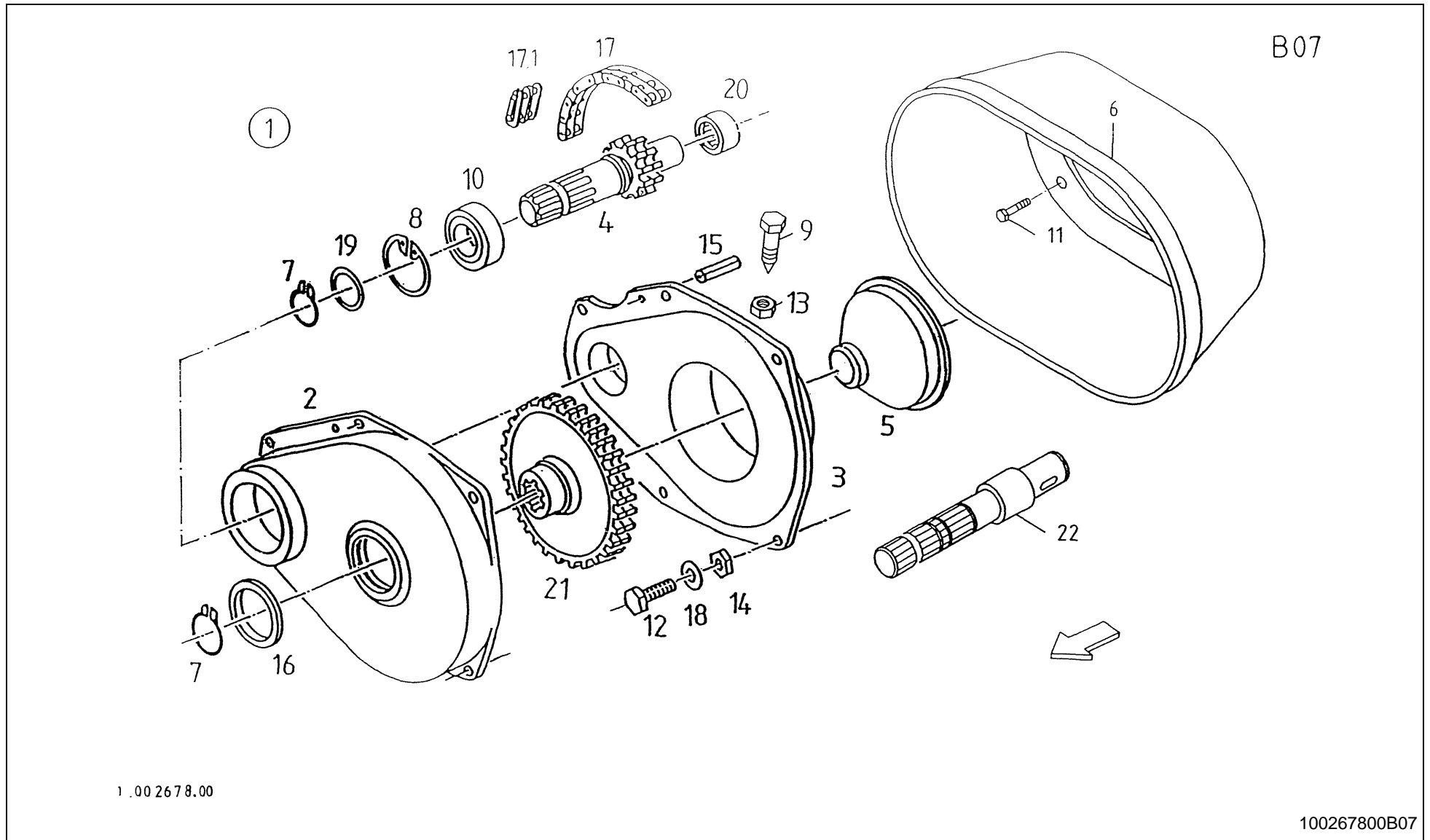
100006302B06



FANEX 833 T / windrowing gear W

PosNo.	Part No.	Qty.	Description	Remark
1	VF06581541	1	GEARBOX	
2	VF06580479	1	CAP	
3	VF06580481	1	HOUSING	
4	VF06580482	1	SHAFT	
5	VF06580480	1	PLUG	
6	VF06581540	1	GUARD	
7	KG01109362	2	CIRCLIP-A 35 X 1.5	
8	KG01129800	1	CIRCLIP-B 62 X 2	
9	VF01138985	1	HEX.HEAD SCREW	
10	KG01357900	1	BALL BEARING 6007-2RS	
11	KG00469461	4	HEX. SCREW M6X40 8.8	
12	KG00469161	2	HEX. SCREW M6X25 8.8	
13	KG01052161	1	HEX. NUT M12 8	
14	KG01067361	10	LOCK NUT M6 8	
15	KG01189062	2	TENSION PIN 6X16	
16	VF06212000	1	FELT RING	
17	VF06213404	1	ROLLER-CHAIN	
17.1	VF06213154	1	CHAIN LINK	X17
18	VF01107158	8	WASHER	
19	VF01137526	1	WASHER	
20	VF06215081	1	NEEDLE BEARING	
21	VF06580478	1	SPROCKET	

FANEX 833 T / gear box W

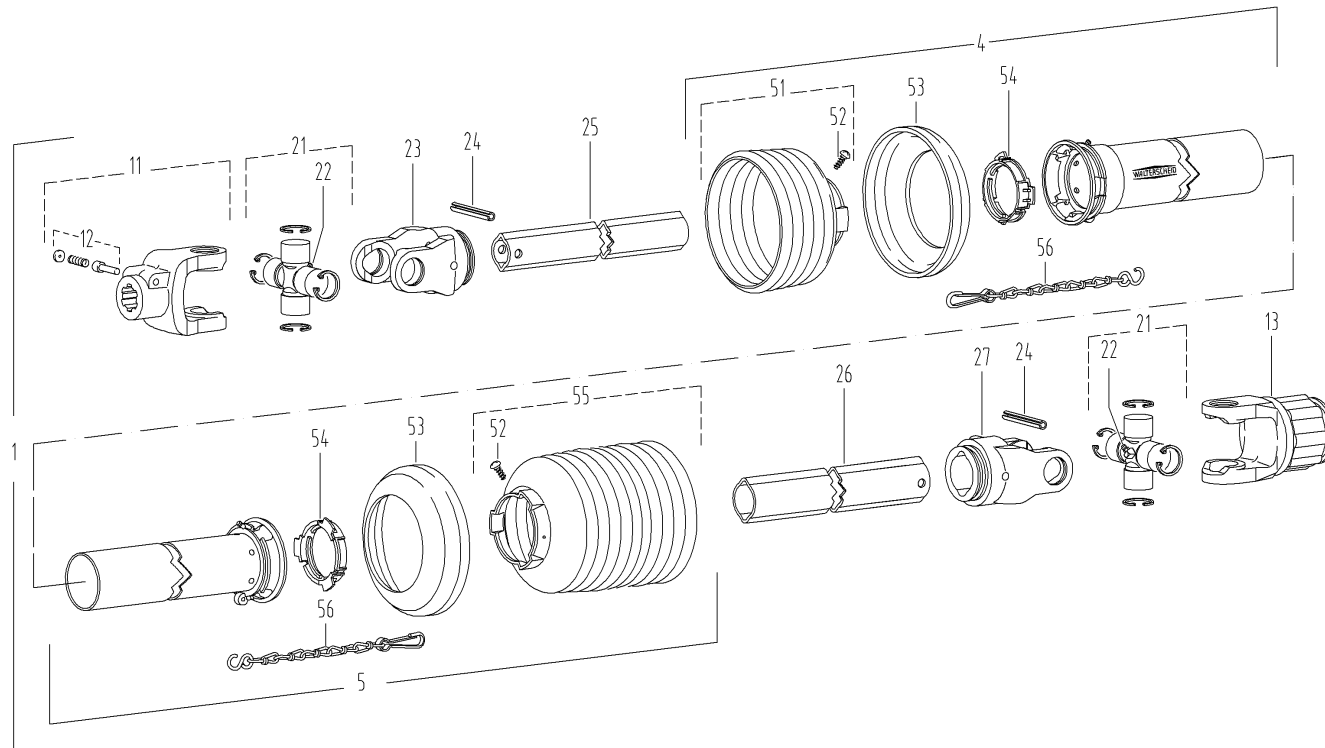




FANEX 833 T / gear box W

PosNo.	Part No.	Qty.	Description	Remark
1	VF16508816	1	GEAR BOX	
2	VF16508811	1	HOUSING COVER	
3	VF16508810	1	TRANSMISSION CASE	
4	VF16508549	1	SHAFT	
5	VF06580480	1	PLUG	
6	VF16508813	1	PROTECTING CUP	
7	KG01109362	1	CIRCLIP-A 35 X 1.5	
8	KG01129800	1	CIRCLIP-B 62 X 2	
9	VF01138985	1	HEX.HEAD SCREW	
10	KG01357900	1	BALL BEARING 6007-2RS	
11	KG00468961	2	HEX. SCREW M6X20 8.8	
12	KG00469261	4	HEX. SCREW M6X30 8.8	
13	KG01052161	1	HEX. NUT M12 8	
14	KG01067361	4	LOCK NUT M6 8	
15	KG01189062	2	TENSION PIN 6X16	
16	VF06212000	1	FELT RING	
17	VF01397977	1	ROLLER CHAIN	
17.1	VF06213154	1	CHAIN LINK	X17
18	VF01107158	2	WASHER	
19	VF01137526	1	WASHER	
20	VF06215081	1	NEEDLE BEARING	
21	VF16508300	1	SPROCKET	
22	VF16508814	1	SHAFT	

B08



1.002590.00

SW-GEL11

100259000B08

FANEX 833 T / univ.prop.shaft Lz=1260 1100 Nm -515

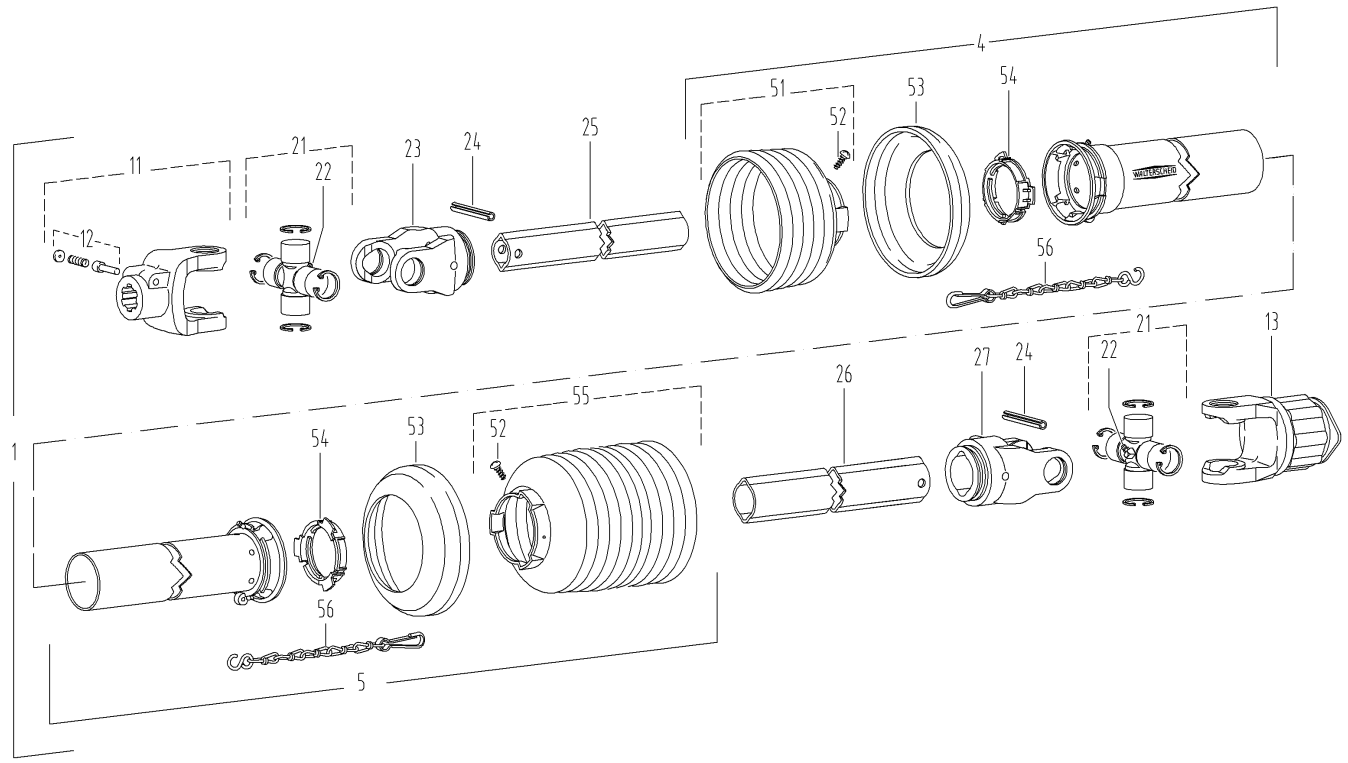


PosNo.	Part No.	Qty.	Description	Remark
1	VF16641261	1	JOINT SHAFT	
4	VF16624900	1	OUTER GUARD HALF	
5	VF16624901	1	INNER GUARD HALF	
11	VF06580093	1	JOINT FORK	
12	VF06581550	1	PIN	
13	VF16624902	1	SAFETY CLUTCH	B B11
21	VF06580149	2	JOINT CROSS	
22	VG63.27.00	2	SMEERNIPPEL BM8X1	
23	VF06580151	1	JOINT FORK	
24	VG61.05.04	2	PIN, TENSION	
25	VF16624903	1	PROFILED TUBE	cut 1140 mm
26	VF16624904	1	PROFILE TUBE	cut 1125 mm
27	VF16622958	1	FORK	
51	VF06582445	1	GUARD	
52	KG00743163	2	TAPPING SCREW 4.2X9.5 4.8	
53	VG82.85.00	2	RING, STEUN-	
54	VF16504075	2	RING	
55	VF06586630	1	GUARD	
56	VG82.36.03	2	KETTING, BORG- L=400	

FANEX 833 T / joint shaft Walterscheid Lz=1510 1100 Nm -515



B10



1.002590.00

SW-GEL11

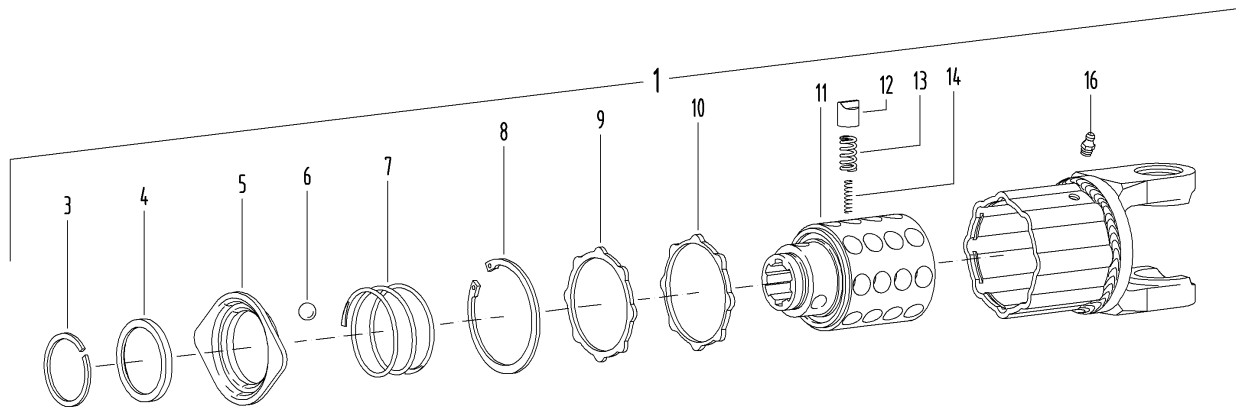
100259000B10

FANEX 833 T / joint shaft Walterscheid Lz=1510 1100 Nm -515



PosNo.	Part No.	Qty.	Description	Remark
1	VF16641261	1	JOINT SHAFT	
4	VF16624900	1	OUTER GUARD HALF	
5	VF16624901	1	INNER GUARD HALF	
11	VF06580093	1	JOINT FORK	
12	VF06581550	1	PIN	
13	VF16624902	1	SAFETY CLUTCH	B B11
21	VF06580149	2	JOINT CROSS	
22	VG63.27.00	2	SMEERNIPPEL BM8X1	
23	VF06580151	1	JOINT FORK	
24	VG61.05.04	2	PIN, TENSION	
25	VF16624903	1	PROFILED TUBE	
26	VF16624904	1	PROFILE TUBE	
27	VF16622958	1	FORK	
51	VF06582445	1	GUARD	
52	KG00743163	2	TAPPING SCREW 4.2X9.5 4.8	
53	VG82.85.00	2	RING, STEUN-	
54	VF16504075	2	RING	
55	VF06586630	1	GUARD	
56	VG82.36.03	2	KETTING, BORG- L=400	

B11



1.002846.00

SW-GEL10

100284600B11

FANEX 833 T / safety clutch M 1100 Nm WALTERSCHEID

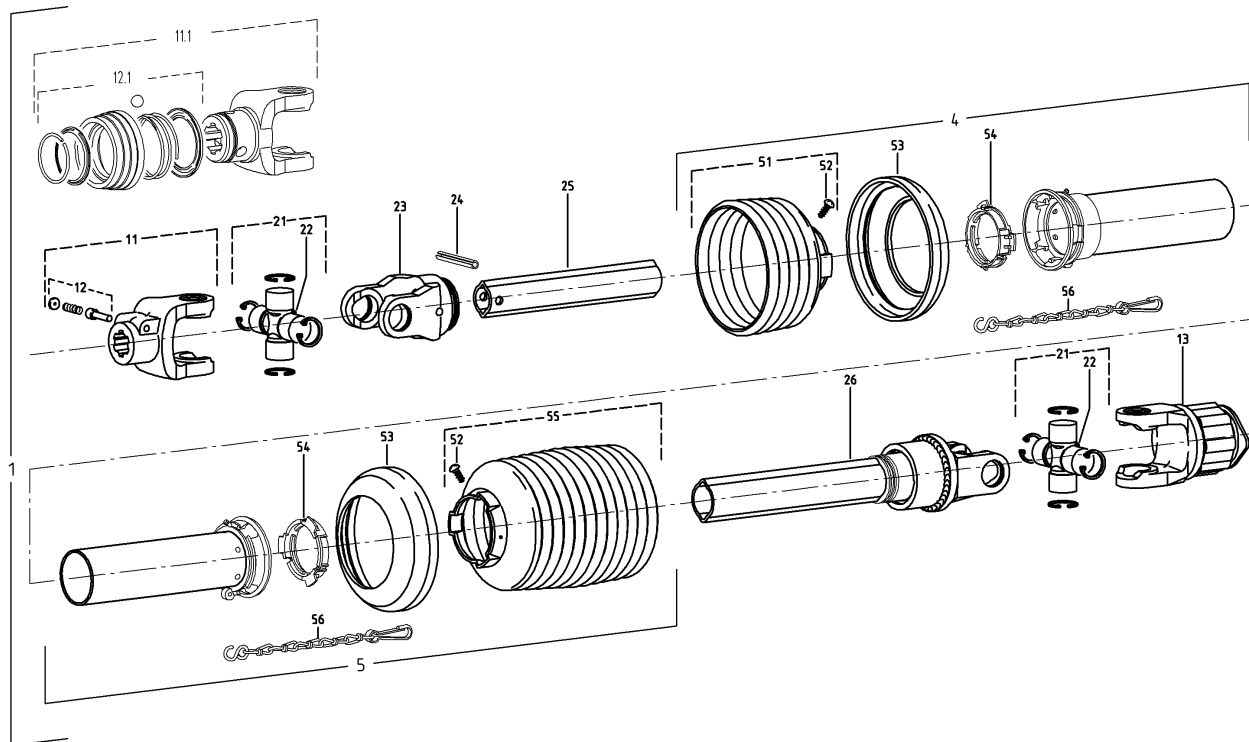


PosNo.	Part No.	Qty.	Description	Remark
1	VF16624902	1	SAFETY CLUTCH	X B10
3	VF01100388	1	SPRING RING	
4	VF06580091	1	RING	
5	VF06580089	1	LOCK	
6	VF16513608	3	BALL	
7	VF06580090	1	COMPRESSION SPRING	
8	VF16506111	1	CIRCLIP	
9	VF06580137	1	RING	
10	VF06243625	1	SEAL RING	
12	VF06564548	32	CAM	
13	VF06581483	32	OUTER SPRING	
14	VF06581485	29	INNER SPRING	
16	VF16606146	1	GREASE NIPPLE	

FANEX 833 T / joint shaft WALTERSCHEID Lz=1510 1100Nm +516



B12



1.003044.01

CM-GELW4

100304401B12

FANEX 833 T / joint shaft WALTERSCHEID Lz=1510 1100Nm +516

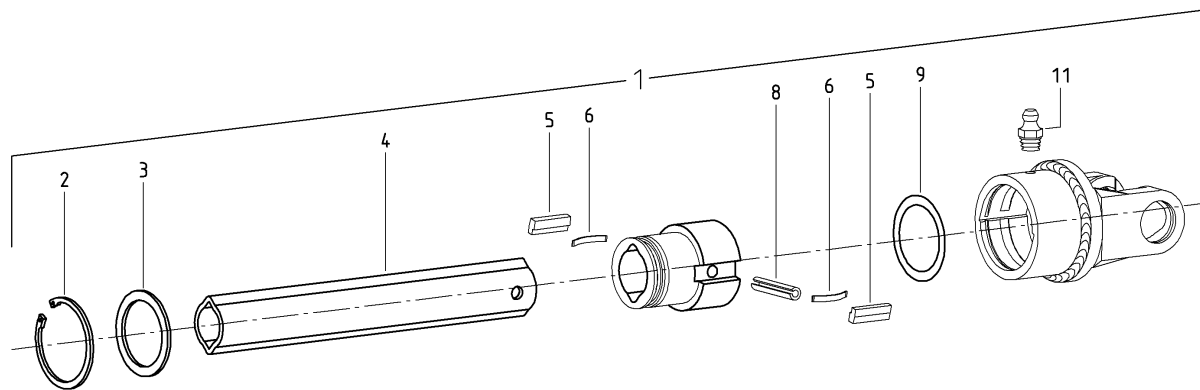


PosNo.	Part No.	Qty.	Description	Remark
1	VF16641815	1	GELENKWELLE 1100NM W 2300 SD15 1510 JF5	
4	VF16606738	1	OUTER GUARD HALF	
5	VF16624993	1	INNER GUARD HALF	kürzen/shorten 260 mm
11	VF06580093	1	JOINT FORK	
11.1	VF16625103	1	FORK	
12	VF06581550	1	PIN	
12.1	VF16625102	1	LOCK	
13	VF16624902	1	SAFETY CLUTCH	B B11
21	VF06580149	2	JOINT CROSS	
22	VG63.27.00	2	SMEERNIPPEL BM8X1	
23	VF06580151	1	JOINT FORK	
24	VG61.05.04	2	PIN, TENSION	
25	VF16624995	1	PROFILED TUBE	kürzen/shorten 40 mm
26	VF16624996	1	FREEWHEELD	B B13
51	VF06582445	1	GUARD	
52	KG00743163	2	TAPPING SCREW 4.2X9.5 4.8	
53	VG82.85.00	2	RING, STEUN-	
54	VF16504075	2	RING	
55	VF06589732	1	GUARD	
56	VG82.36.03	2	KETTING, BORG- L=400	

FANEX 833 T / overrunning clutch



B13



1.003045.00

CM-Gelw5

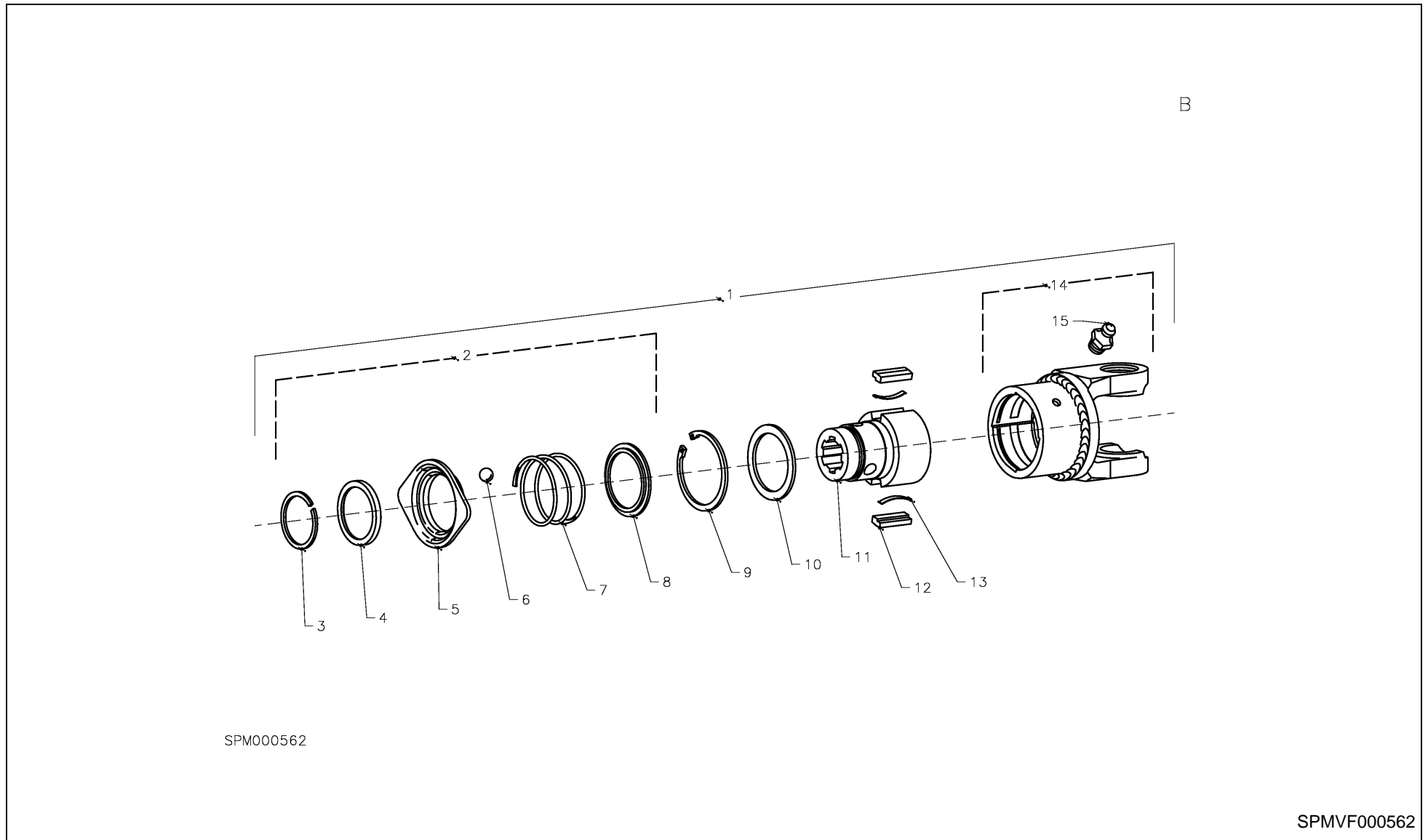
100304500B13

FANEX 833 T / overrunning clutch



PosNo.	Part No.	Qty.	Description	Remark
1	VF16624996	1	FREEWHEELD	
2	VF01107850	1	CIRCLIP	
3	VF16506134	1	SHIM	
4	VF16624904	1	PROFILE TUBE	
5	VF16500126	2	LOCKING PIECE	
6	VF16500127	2	LEAF SPRING	
8	VF01157380	1	DOWEL PIN	
9	VF16624985	1	RETAINER LEFT	
11	VF01120693	1	GREASE NIPPLE	

FANEX 833 T / key-type overrunning clutch

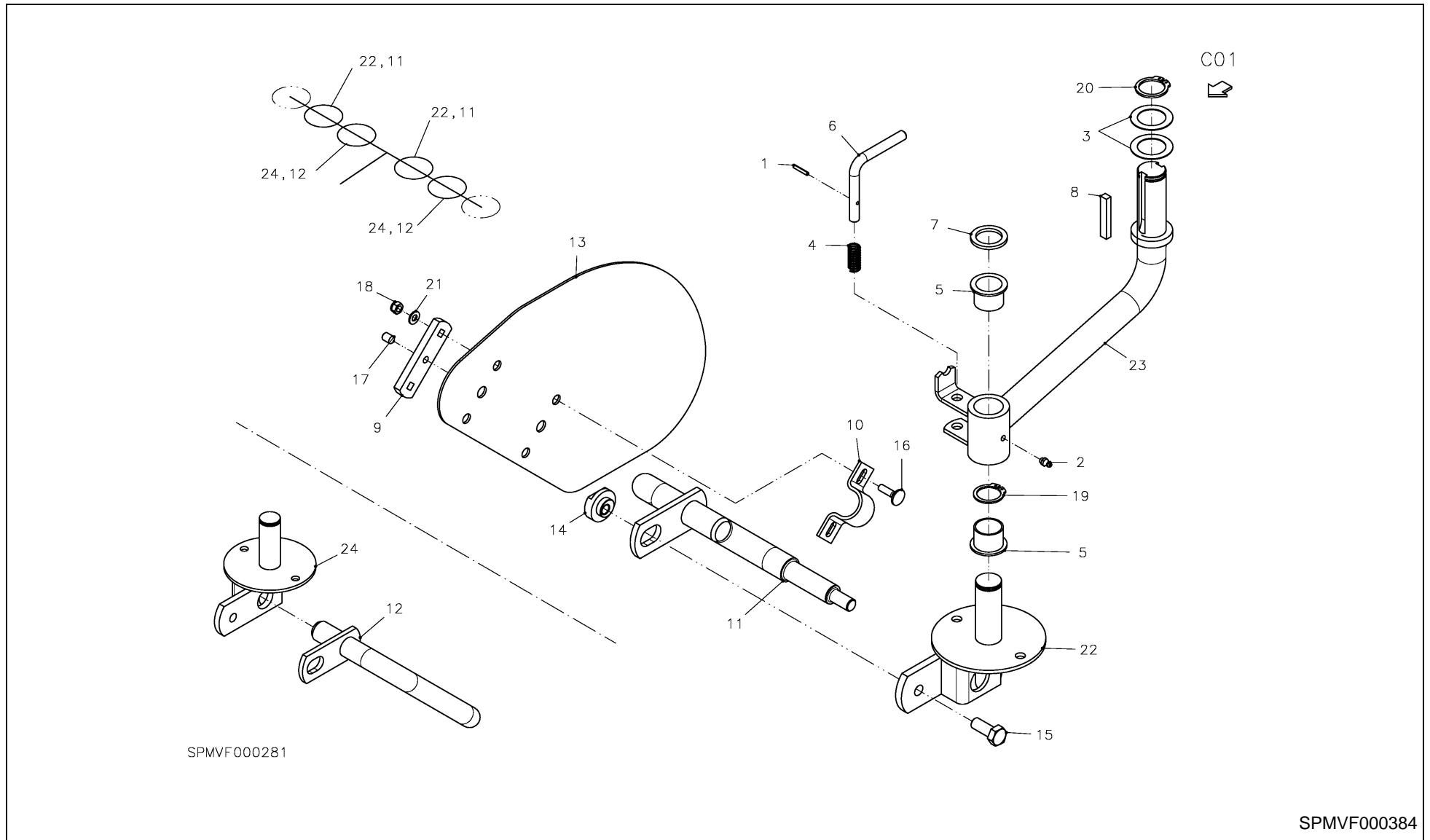


FANEX 833 T / key-type overrunning clutch



PosNo.	Part No.	Qty.	Description	Remark
1	VG56.141.40	1	KOPPELING, VRIJLOOP- W2300-	
2	VF16500123	1	LOCK	
3	VF01139992	1	SNAP RING	
4	VF16500124	1	ANGLE RING	
5	VF06580089	1	LOCK	
6	VF16513608	3	BALL	
7	VF06580090	1	COMPRESSION SPRING	
8	VF06584146	1	BACK-UP SPRING	
9	KG01130500	1	CIRCLIP-B 72 X 2.5	
10	VF16500125	1	SHIM	
11	VF16616074	1	HUB	
12	VF16500126	2	LOCKING PIECE	
13	VF16500127	2	LEAF SPRING	
14	VG21.31.56	1	CLUTCH HOUSING, CCW ROTAT. PTO	
15	VGND9813V	1	GREASE NIPPLE	

FANEX 833 T / WHEEL AXLE

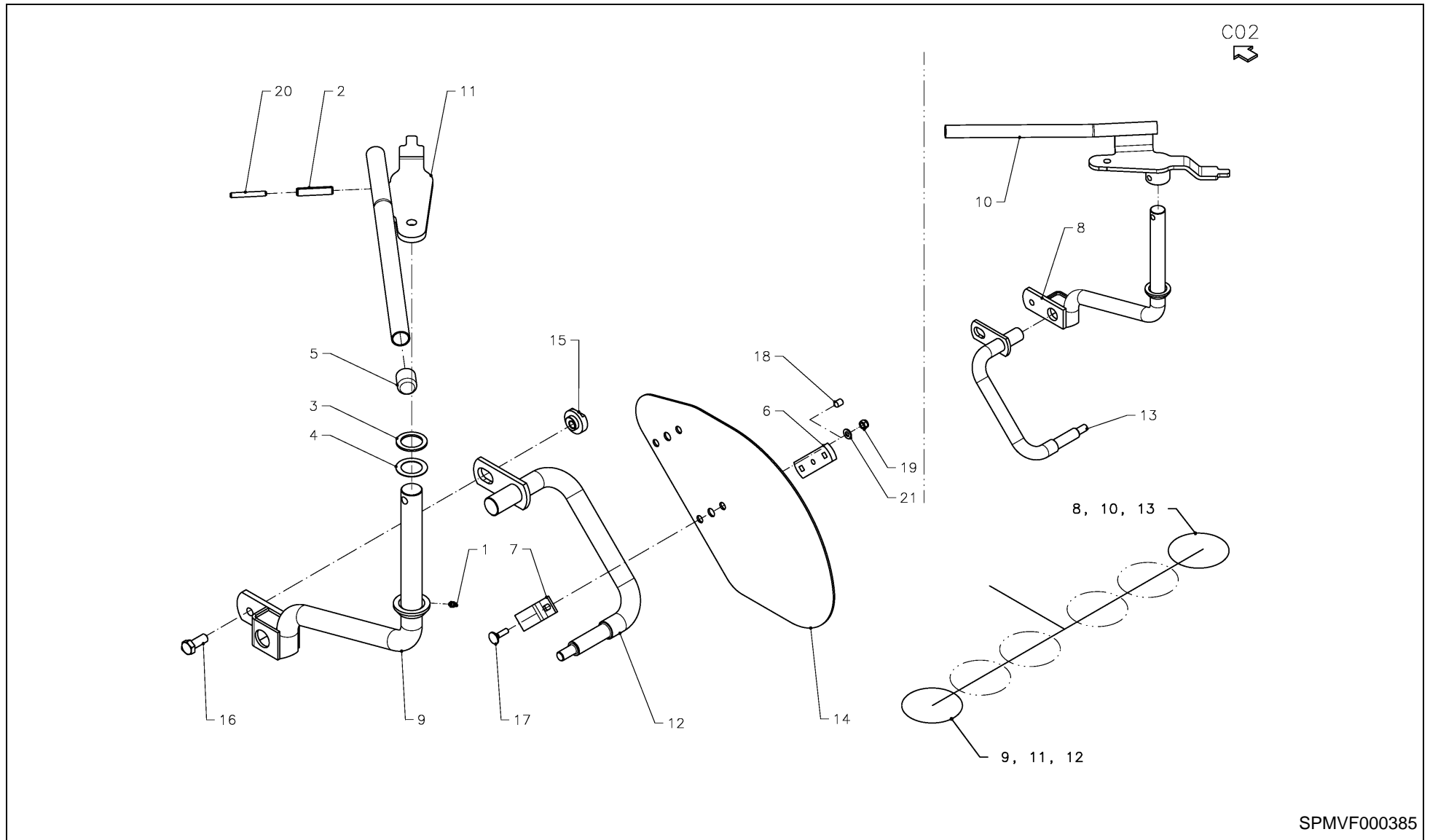




FANEX 833 T / WHEEL AXLE

PosNo.	Part No.	Qty.	Description	Remark
1	KG01186262	4	TENSION PIN 4X24	
2	VF01120693	4	GREASE NIPPLE	
3	VF06214558	8	SPACER	
4	VF06215282	4	COMPRESSION SPRING	
5	VF06229502	8	BUSH	
6	VF06563365	4	LEVER	
7	VF06569968	4	WASHER	
8	VF16608469	4	FEATHER	
9	VF16623512	4	CONNECTING PLATE	
10	VF16623515	4	RETAINER	
11	VF16641309.86	2	AXLE/PIVOT PIN	
12	VF16641310.86	2	AXLE/PIVOT PIN	
13	VF16641447.86	2	GUARD PLATE	
14	VF16643070	4	EXCENTRIC DISC	
15	KG00478661	4	HEX. SCREW M14X35 8.8	
16	KG00639261	8	CARRIAGE BOLT M8X30 8.8	
17	KG00919000	4	SET SCREW M10X16 45H	
18	KG01067561	8	LOCK NUT M8 8	
19	KG01099100	4	CIRCLIP-A 32 X 2	
20	KG01099300	4	CIRCLIP-A 35 X 2.5	
21	KG01267361	8	WASHER M8	
22	VF16640270.86	2	PIVOTED LEVER	
23	VF16640276.86	4	SUPPORT	
24	VF16640272.86	2	PIVOTED LEVER	

FANEX 833 T / pivot pin

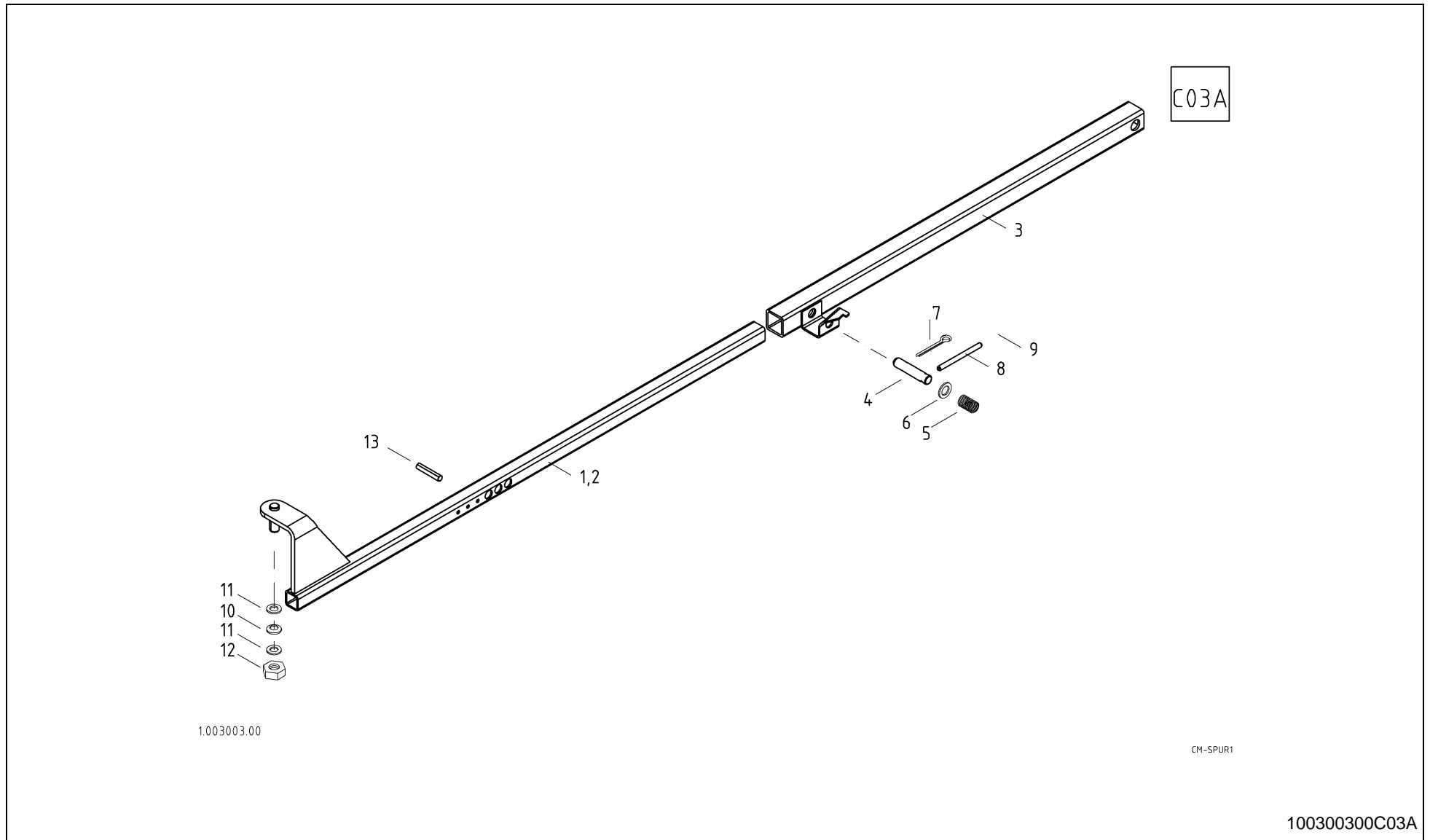




FANEX 833 T / pivot pin

PosNo.	Part No.	Qty.	Description	Remark
1	VF01120693	1	GREASE NIPPLE	
2	VF01157403	2	DOWEL PIN	
3	VF06214329	2	WASHER	
4	VF06214558	1	SPACER	
5	VF16609767	2	CAP	
6	VF16623512	4	CONNECTING PLATE	
7	VF16623515	4	RETAINER	
8	VF16641026.86	1	PIVOT PIN	
9	VF16641027.86	1	PIVOT PIN	
10	VF16641074.86	1	CONTROL LEVER	
11	VF16641135.86	1	LEVER CONTROL	
12	VF16641309.86	1	AXLE/PIVOT PIN	
13	VF16641310.86	1	AXLE/PIVOT PIN	
14	VF16641447	2	GUARD PLATE	
15	VF16643070	2	EXCENTRIC DISC	
16	KG00478661	2	HEX. SCREW M14X35 8.8	
17	KG00639261	8	CARRIAGE BOLT M8X30 8.8	
18	KG00919000	4	SET SCREW M10X16 45H	
19	KG01067561	8	LOCK NUT M8 8	
20	KG01192162	2	TENSION PIN 8X60	
21	KG01267361	8	WASHER M8	

FANEX 833 T / track rod

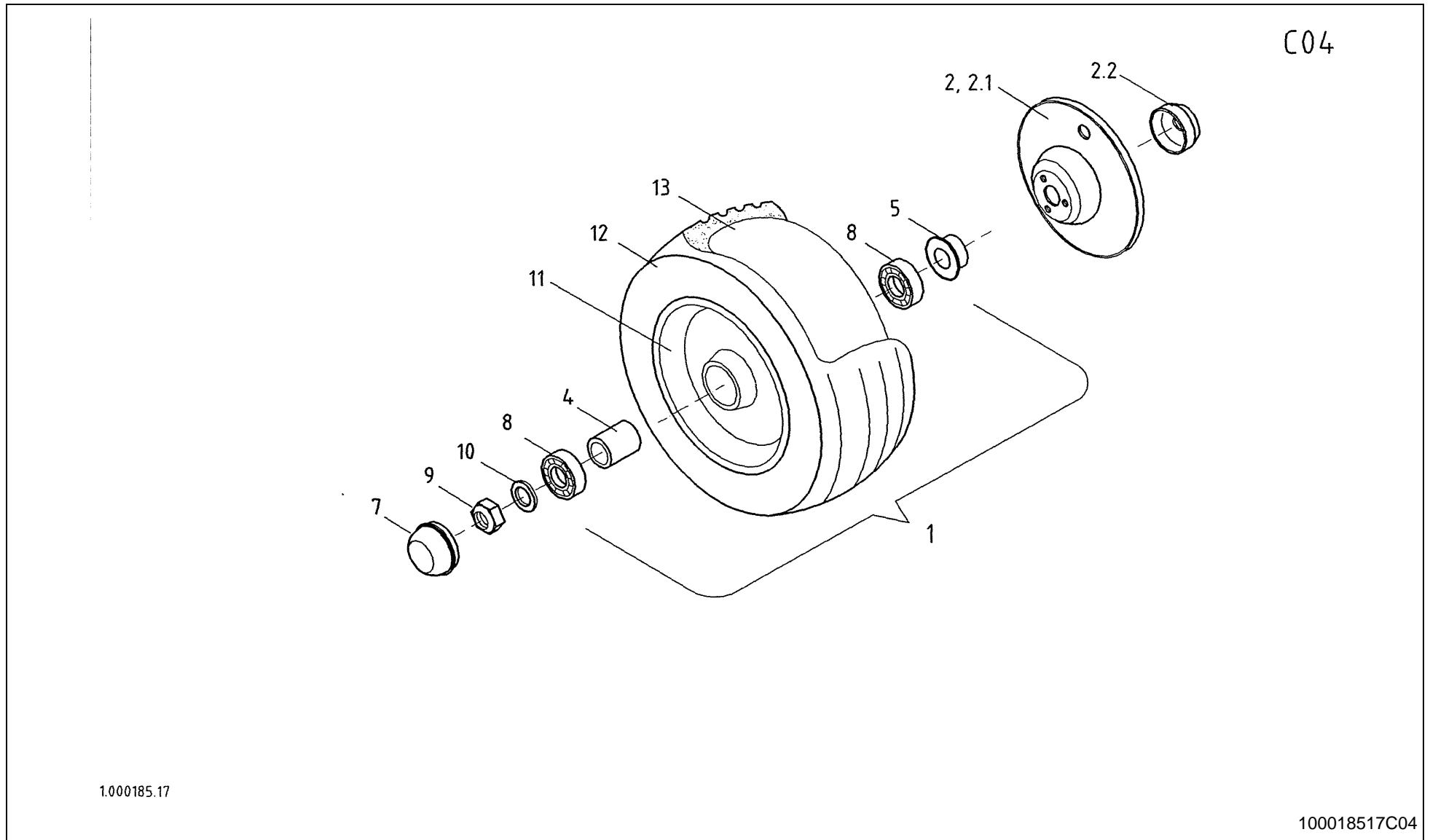


FANEX 833 T / track rod



PosNo.	Part No.	Qty.	Description	Remark
1	VF16641105.86	1	TUBE	
2	VF16641104.86	1	TUBE	
3	VF16641107.86	2	TUBE	
4	VF16609482	2	STOPPING BOLT	
5	VF06215292	2	SPRING, COMPRESSION	
6	KG01267761	2	WASHER M16	
7	KG01251561	2	SPLIT PIN 4X25 ST	
8	KG01192462	2	TENSION PIN 8X100	
9	VF16606585	2	CAP	
10	VF06210723	2	CUP SPRING	
11	VF06214220	4	WASHER	
12	KG01067961	2	LOCK NUT M16 8	
13	KG01189662	2	TENSION PIN 6X40	

FANEX 833 T / tyres 16 x 6,5 x 8

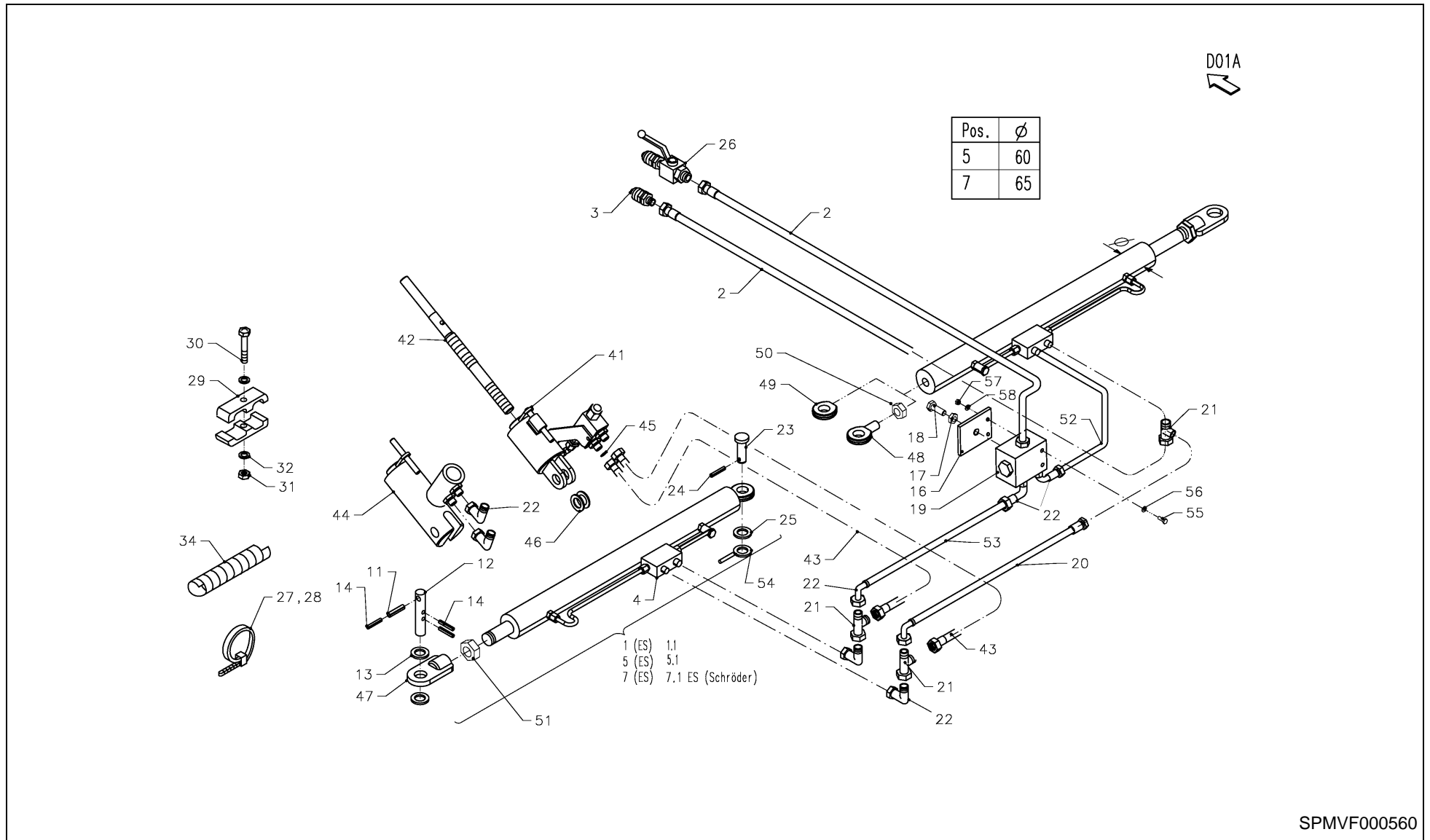


FANEX 833 T / tyres 16 x 6,5 x 8



PosNo.	Part No.	Qty.	Description	Remark
1	VF06564096	6	WHEEL16X6,5X8 SILVER	
2	VF16605580	6	ANTI WRAPPING DEVICE (SILVER)	
2.2	VF16622598	6	CHAPEAU	
4	VF06249879	6	SPACER	
5	VF06567492	6	GASKET	
7	VF06580546	6	CAP	
8	KG01476400	6	BALL BEARING 6205-2RS C3	
9	KG01067761	6	LOCK NUT M12 8	
10	VF06214206	6	WASHER	
11	VF16643116	6	RIM	
12	VF06216590	6	OUTER COVER	
13	VF06216638	6	INNER TUBE	

FANEX 833 T / hydr.device with divider (+1081)

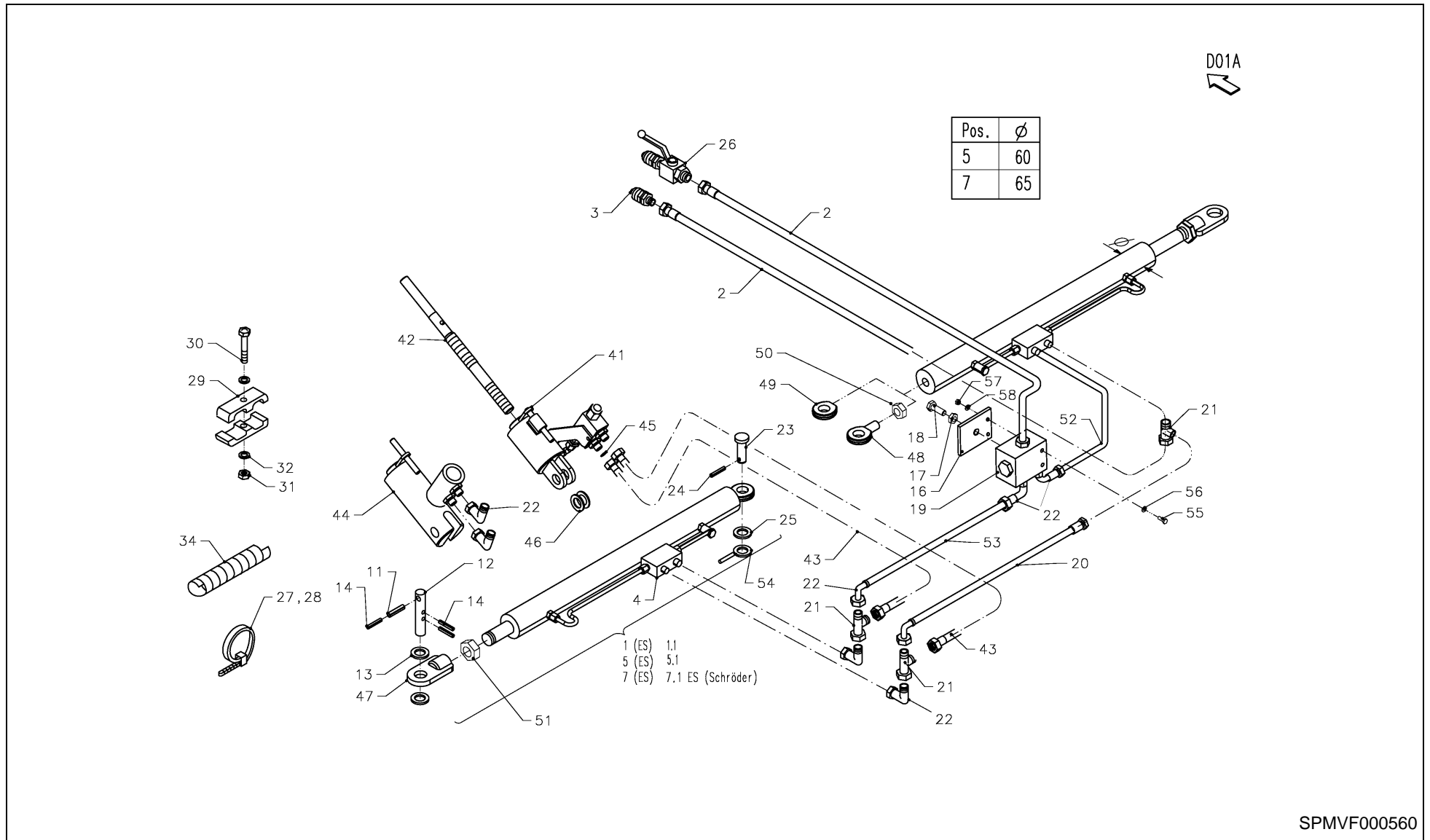




FANEX 833 T / hydr.device with divider (+1081)

PosNo.	Part No.	Qty.	Description	Remark
1	VF16641095	2	HYDRAULIC CYLINDER	-305
1.1	VF16624905		SEALING SET	X1
2	VF16641270	2	HYDR.HOSE	
3	VF16615171	1	PLUG COUPLING HYDR.	
4	VF16640443	1	SPERRVENTIL M.NIPPEL 4XXGE 8PL-R3/8 MON	X 1,5,7
5	VF16641502.86	2	HYDRAULIC CYLINDER 50-30	+306
5.1	VF16624905		SEALING SET	X5
7	VF16642336.86	2	HYDRAULIKZYL.55-30 494HUB M.SPERRVENTIL	+606
7.1	VF16624987		SEALING SET	X7
11	KG01194162	2	TENSION PIN 10X50	
12	VF16641130	2	O-SEAL	
13	VF06214329	4	WASHER	
14	KG01189862	6	TUBULAR SPLITED PIN 6X50 ZN DIN 1481	
16	VF16644488	1	PLATE	
17	KG01267561	1	WASHER M12	
18	KG00476261	1	HEX. SCREW M12X20 8.8	
19	VF16643230	1	DISTRIBUTOR 15L/MIN	+1041
20	VF16506818	1	HYDR.HOSE	
21	VF01141654	4	T-UNION	
22	VF01172986	6	ELBOW XEVW 8-L A3C	
23	VF16609190	2	PIN	
24	KG01188162	2	TENSION PIN 5X36	
25	KG01267961	4	WASHER M20	
26	VF16604641	1	ROOSTER WITH PIN	
27	VF16604765	10	CABLE CONNECTOR	
28	VF16618217	10	CLAMPING BAND	
29	VF16650133	2	PIPE CLIP	
30	KG00353361	1	HEX. BOLT M8X45 8.8	
31	KG01067561	1	LOCK NUT M8 8	
32	VF06214193	2	WASHER	
34	VF16502426	2	WIRE CHAFING GUARD	
41	VF16642258.86	1	CYLINDER SCHROEDER (ES)	
41	VF16643858		SEALING SET FA.SCHROEDER	
42	VF16642259	1	SPINDEL DEICHSELHYD. FANEX 833	
43	VF16506780	2	HYDR.HOSE	
44	VF16642450.86	1	HYDR.CYLINDER	+860
44	VF16643857		SEALING SET FA.BUETER	
45	VF06581857	1	SCREEN	
46	KG01267961	2	WASHER M20	
47	VF16643859	1	BAR END	

FANEX 833 T / hydr.device with divider (+1081)

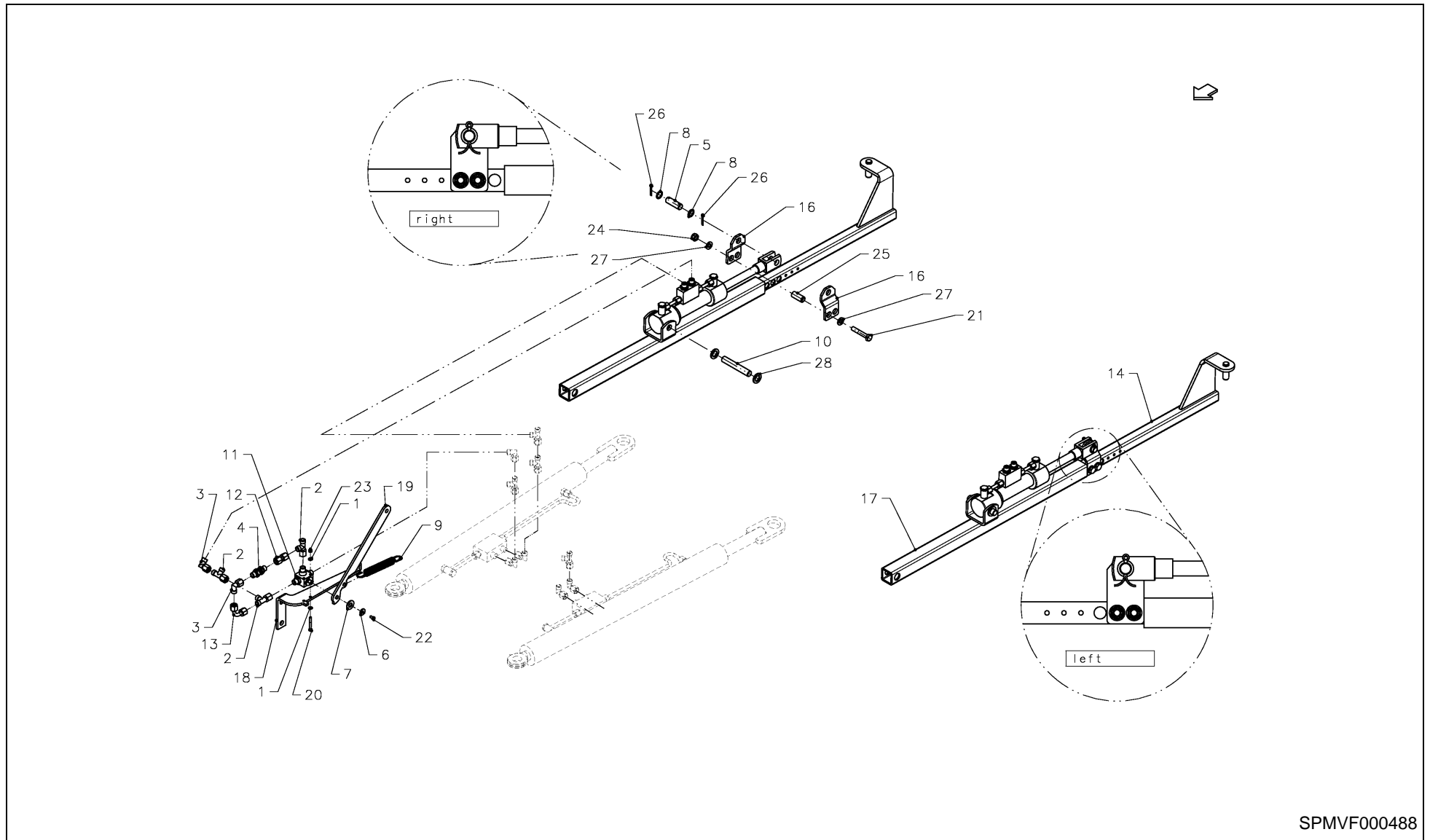


FANEX 833 T / hydr.device with divider (+1081)



PosNo.	Part No.	Qty.	Description	Remark
48	VF16603725	1	JOINT HEAD (RIGHT)	
49	VF16643860	1	BAR END WELDED	
50	VF01138933	1	HEXNUT	
51	VF01138941	1	HEXNUT	
52	VF16501744	1	HYDR.HOSE	
53	VF16607410	1	HYDR. HOSE	
54	VF16644586	1	SPACER WITH STRAP	
55	KG00351161	1	SCREW M6X45 CL.8.8 ZN NFE 27311 DIN 931	
56	KG01267261	1	WASHER M6	
57	KG01067361	1	LOCK NUT M6 8	
58	KG01281561	1	SPRING WASHER M6	

FANEX 833 T / hydraulic device



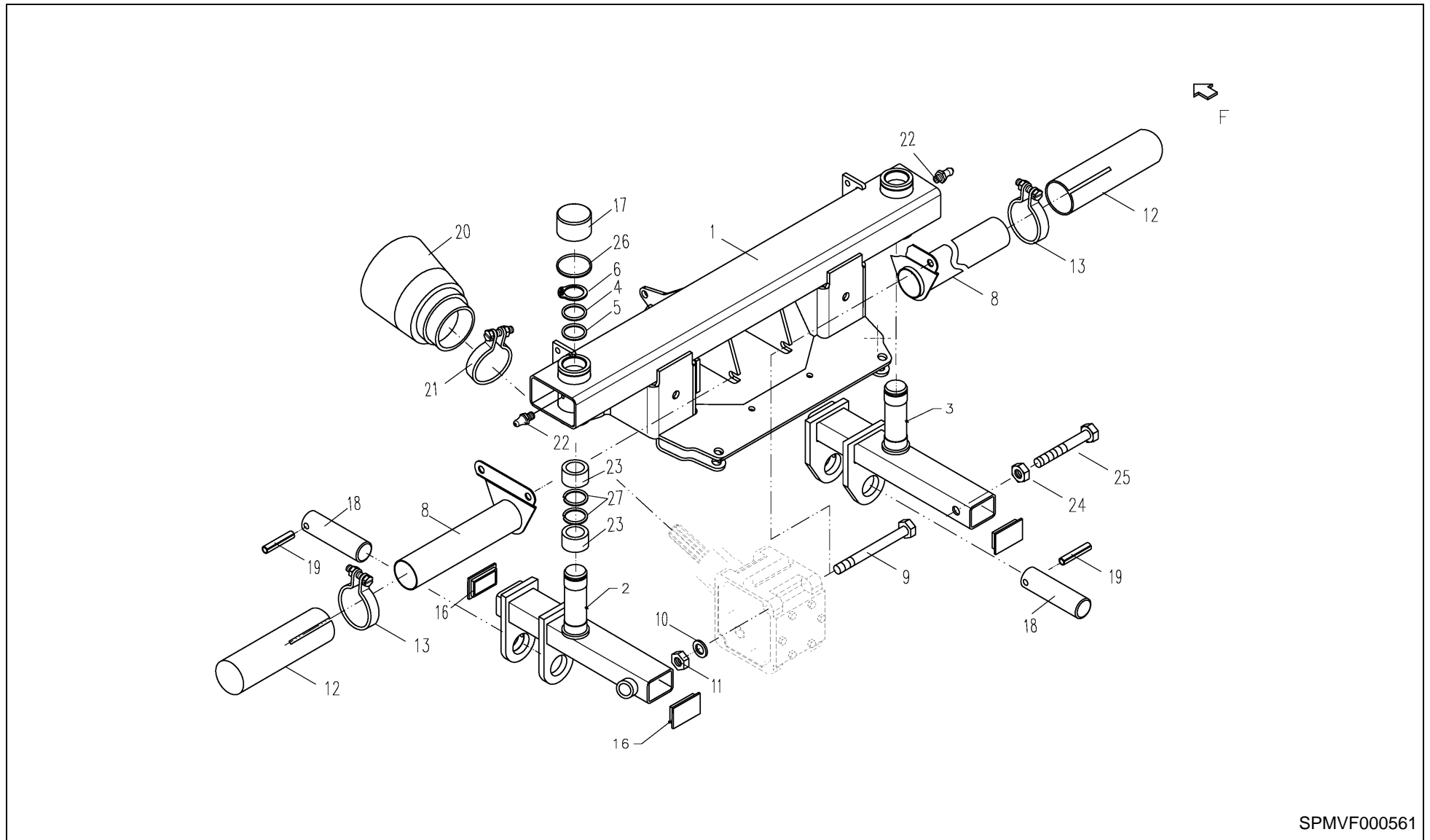
SPMVF000488



FANEX 833 T / hydraulic device

PosNo.	Part No.	Qty.	Description	Remark
1	VF01138092	4	WASHER/DISC/PLATE	
2	VF01141654	3	T-UNION	
3	VF01172986	2	ELBOW XE VW 8-L A3C	
4	VF01397624	1	CHECK VALVE	
5	VF06209939	2	PIN	
6	VF06214189	1	WASHER	
7	VF06214269	1	WASHER	
8	VF06214287	4	WASHER	
9	VF06215536	1	TENSION SPRING	
10	VF16607331	2	PIN	
11	VF16617533	1	CONTROL UNIT/ROOSTER	
12	VF16623712	1	INTERMEDIATE NOZZLE	
13	VF16623744	1	HYDR. PIPE	
14	VF16641105	1	TUBE INNERSITE LI.WELD	
16	VF16641514	4	TRACTION EYE	
17	VF16641517	2	TUBE OUTERSIDE WELD	
18	VF16641528	1	RETAINING PLATE	
19	VF16643683.61	1	CAM LEVER	
20	KG00350161	2	HEX. BOLT M5X40 8.8	
21	KG00355661	4	HEX. BOLT M10X60 8.8	
22	KG00467061	1	HEX. SCREW M5X10 8.8	
23	KG01067261	2	LOCK NUT M5	
24	KG01067661	4	LOCK NUT M10 8	
25	KG01197762	4	TENSION PIN 16X40	
26	KG01251561	2	SPLIT PIN 4X25 ST	
27	KG01267461	8	WASHER M10	
28	VF16607333	4	LOCKING WASHER	

FANEX 833 T / central machine



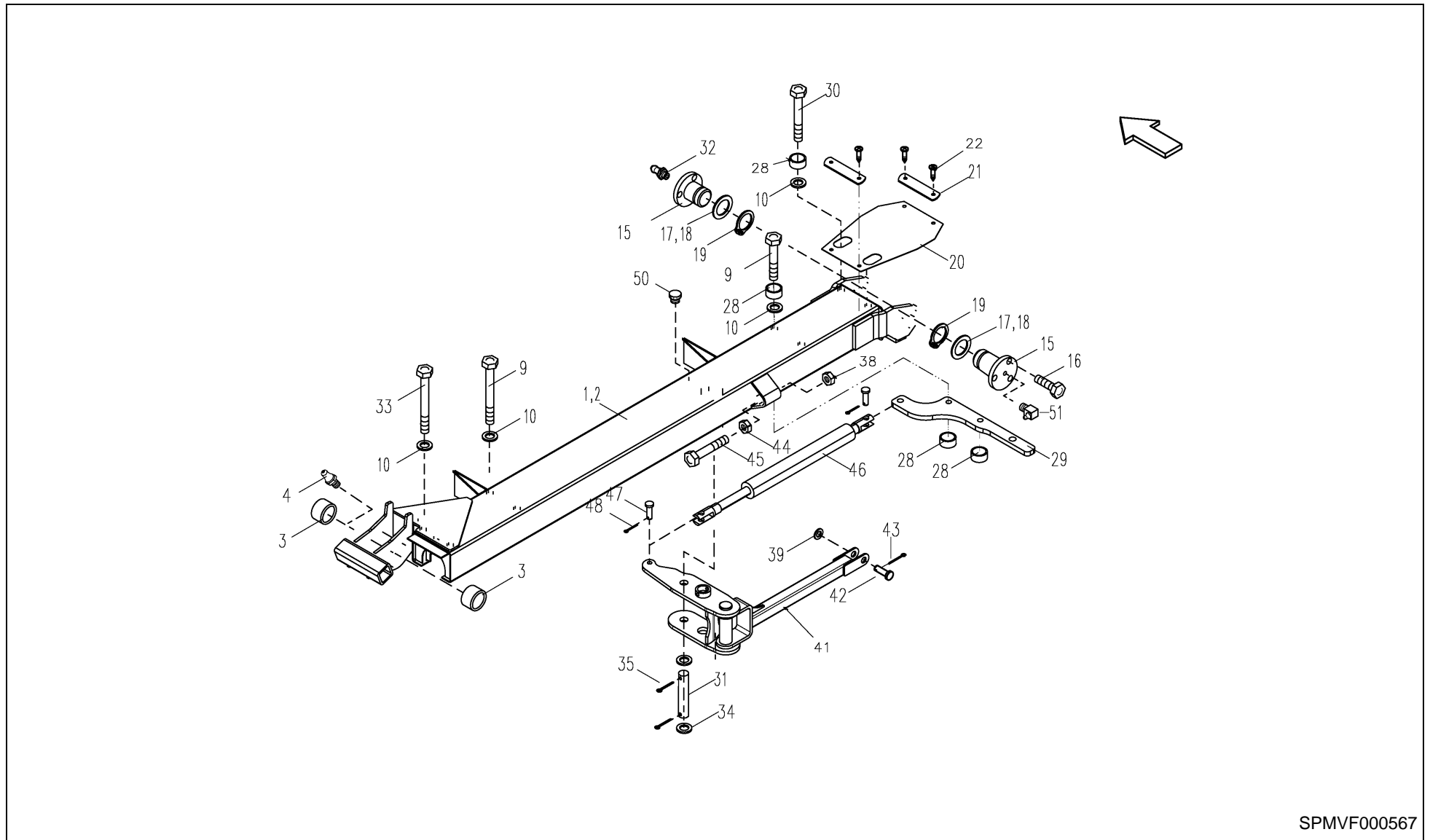
SPMVF000561



FANEX 833 T / central machine

PosNo.	Part No.	Qty.	Description	Remark
1	VF16640231.94	1	PIPE/TUBE	-170
1	VF16642512.94	1	TUBE	+171
2	VF16640190.94	1	AXLE/PIN	
3	VF16640191.94	1	AXLE/PIN	
4	VF01133287	2	WASHER	
5	VF06214504	2	SPACER	
6	KG01100100	2	CIRCLIP-A 50 X 3	
8	VF16640259.94	2	COVER TUBE	
9	VF16601691.86	2	SCREW/BOLT	
10	KG01267761	2	WASHER M16	
11	KG01067961	2	LOCK NUT M16 8	
12	VF16644549	1	PROTECTING TUBE	
13	VF01128273	1	CLAMPING PIECE	
16	VF16623032	4	PLUG	
17	VF16640207	2	CAP	
18	VF16643640	2	PIN D = 50 L = 160	
19	VG61.05.04	2	PIN, TENSION	
20	VF06584165	1	PROTECTING FUNNEL	
21	VF06216439	1	TIGHTENING CLIP	
22	VF16623541	2	GREASE NIPPLE	
23	VF16622121	4	BUSH	+171 X1
24	KG01052500	2	HEX. NUT M20 8	+171
25	KG00484861	2	HEX. SCREW M20X160 8.8	+171
26	VF06214751	2	O-RING	+386
27	VF01174876	4	SNAP RING	+656 X1

FANEX 833 T / side machine inside

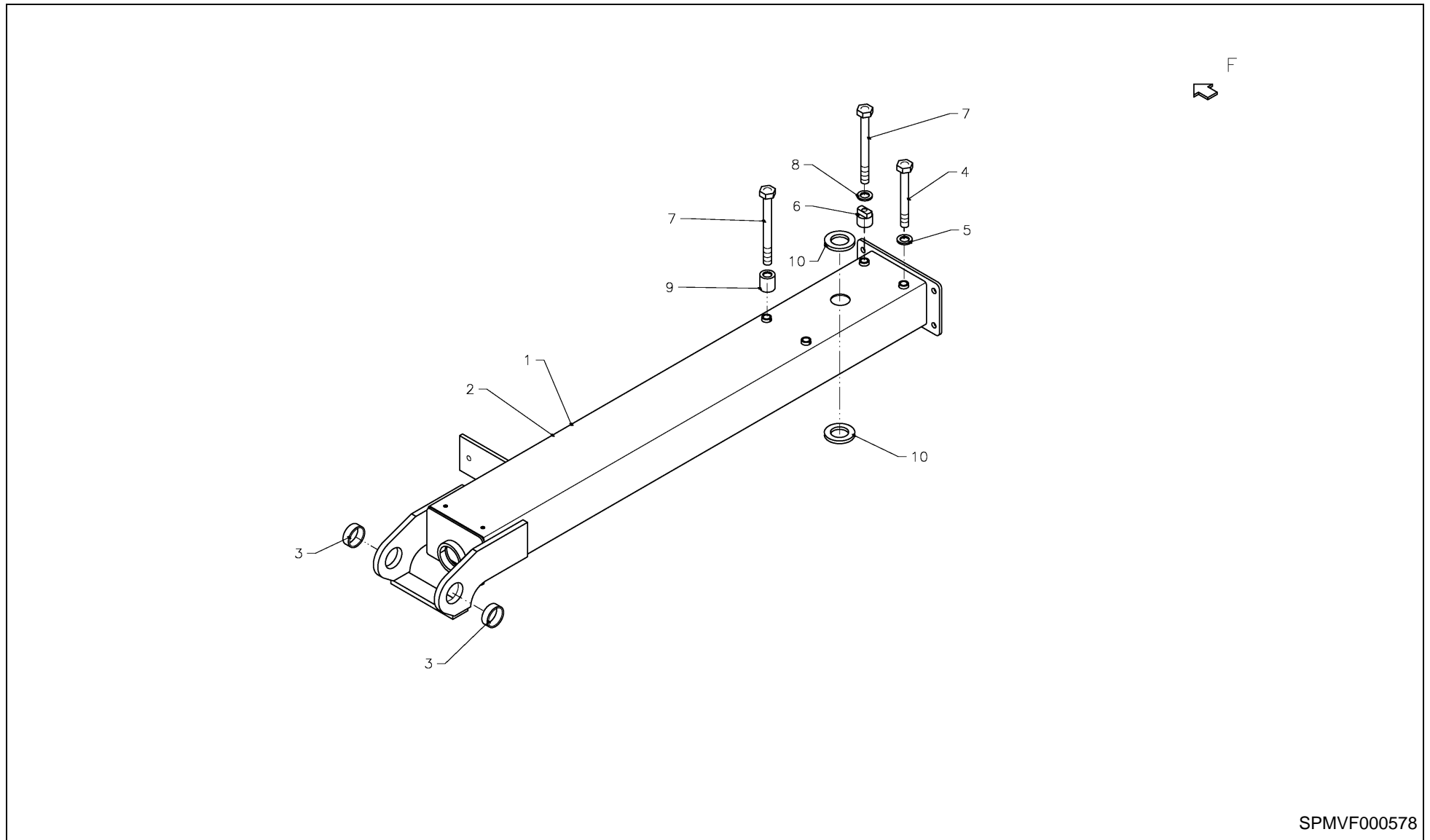


SPMVF000567



FANEX 833 T / side machine inside

PosNo.	Part No.	Qty.	Description	Remark
1	VF16641134.94	1	BEARING TUBE	
2	VF16641132.94	1	BEARING TUBE	
3	VF16622121	4	BUSH	
4	VF01168225	2	GREASE NIPPLE	
9	KG00358661	8	HEX. BOLT M12X130 8.8	
10	KG01267561	14	WASHER M12	
15	VF16624133	4	PIVOT PIN	
16	VF01173381	12	HEX.HEAD SCREW	
17	VF16620206	4	SHIM	
18	VF06214492	4	SPACER	
19	KG01099700	4	CIRCLIP-A 42 X 2.5	
20	VF16623542	2	CANVAS	
21	VF16623537	4	CLIP	
22	VF01174902	8	HEX HEAD SCREW	
26	VF16641295.86	1	YOKE	
27	VF16641293.86	1	YOKE	
28	VF16650225	4	SPACER SLEEVE	
29	VF16641278.86	2	TIGTEHNING LEVER	
30	KG00358861	4	HEX. BOLT M12X150 8.8	
31	VF16641111	2	PIN	
32	VF01168225	2	GREASE NIPPLE	
33	KG00358761	4	HEX. BOLT M12X140 8.8	
34	VF06214313	4	WASHER	
35	KG01253861	4	SPLIT PIN 6.3X45 ST	
36	VF16641197	2	SPACER TUBE	
37	KG00484361	2	HEX. SCREW M20X100 8.8	
38	KG01068161	4	LOCK NUT M20 8	
39	KG01267961	10	WASHER M20	
41	VF16641293.86	2	YOKE	
41	VF16641295.86	2	YOKE	
42	VF16641219	2	PIN	
43	KG01252661	2	SPLIT PIN 5X32 ST	
44	KG01052500	2	HEX. NUT M20 8	
45	VF16641133	2	HEAD SCREW	
46	VF16641086	2	COMPRESSION SPRING	
47	VF16641145	4	PIN	
48	KG01251561	4	SPLIT PIN 4X25 ST	
50	VF01097625	4	PLUG	
51	VF01120700	2	GREASE NIPPLE	



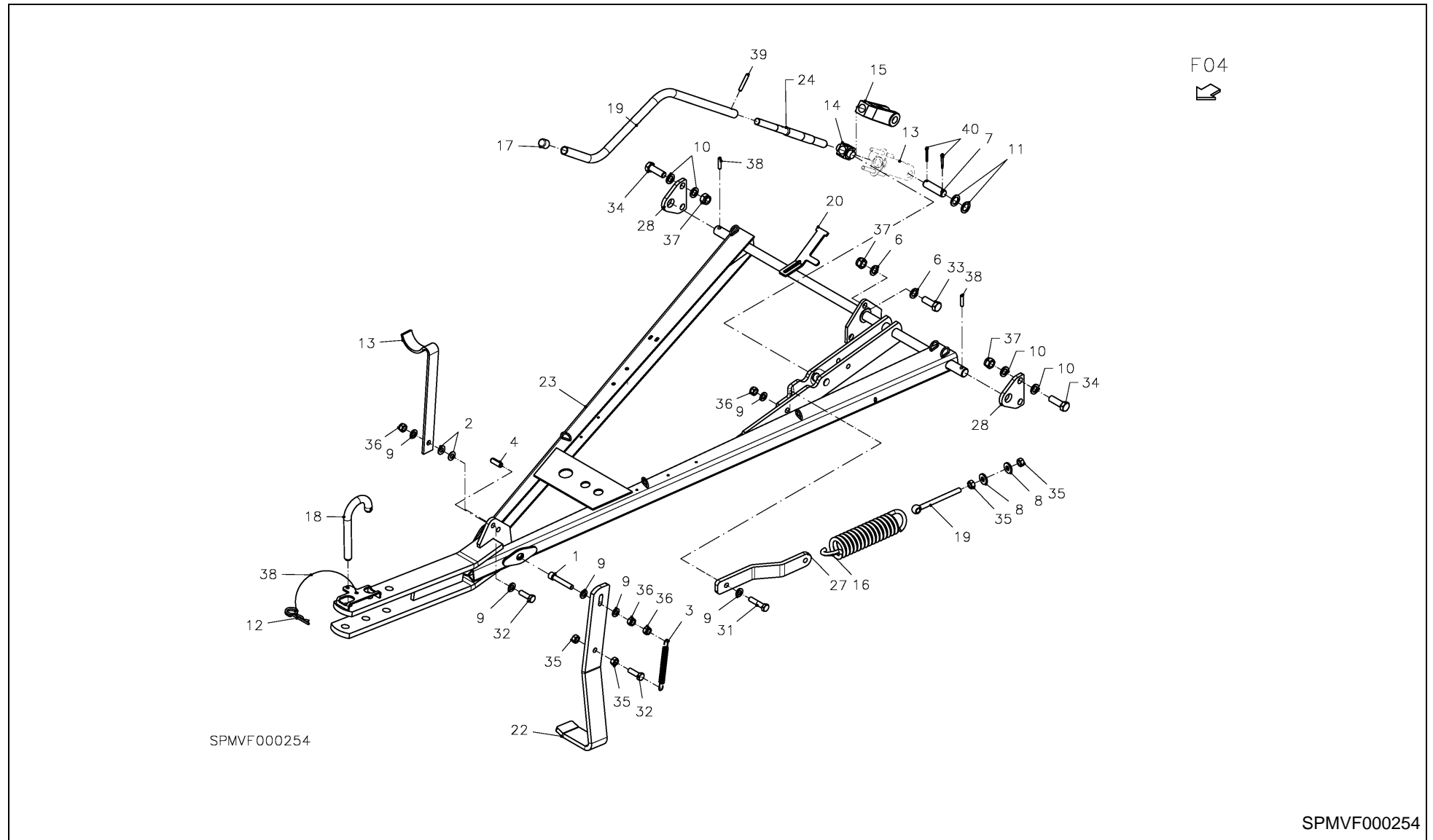
SPMVF000578

FANEX 833 T / lateral machine



PosNo.	Part No.	Qty.	Description	Remark
1	VF16640161.94	1	SUPPORT TUBE	
2	VF16640172.94	1	SUPPORT TUBE	
3	VF16640384	8	BUSH	
4	KG00358661	4	HEX. BOLT M12X130 8.8	
5	KG01267561	4	WASHER M12	
6	VF16640834.94	2	EXENTRIC WHEEL	
7	KG00358961	8	HEX. BOLT M12X160 8.8	
8	VF01397652	2	RETAINING WASHER	
9	VF16607908	2	SPACER TUBE	
10	VF16609814	4	SEAL RING	

FANEX 833 T / DRAWBAR WITH ACCESS.

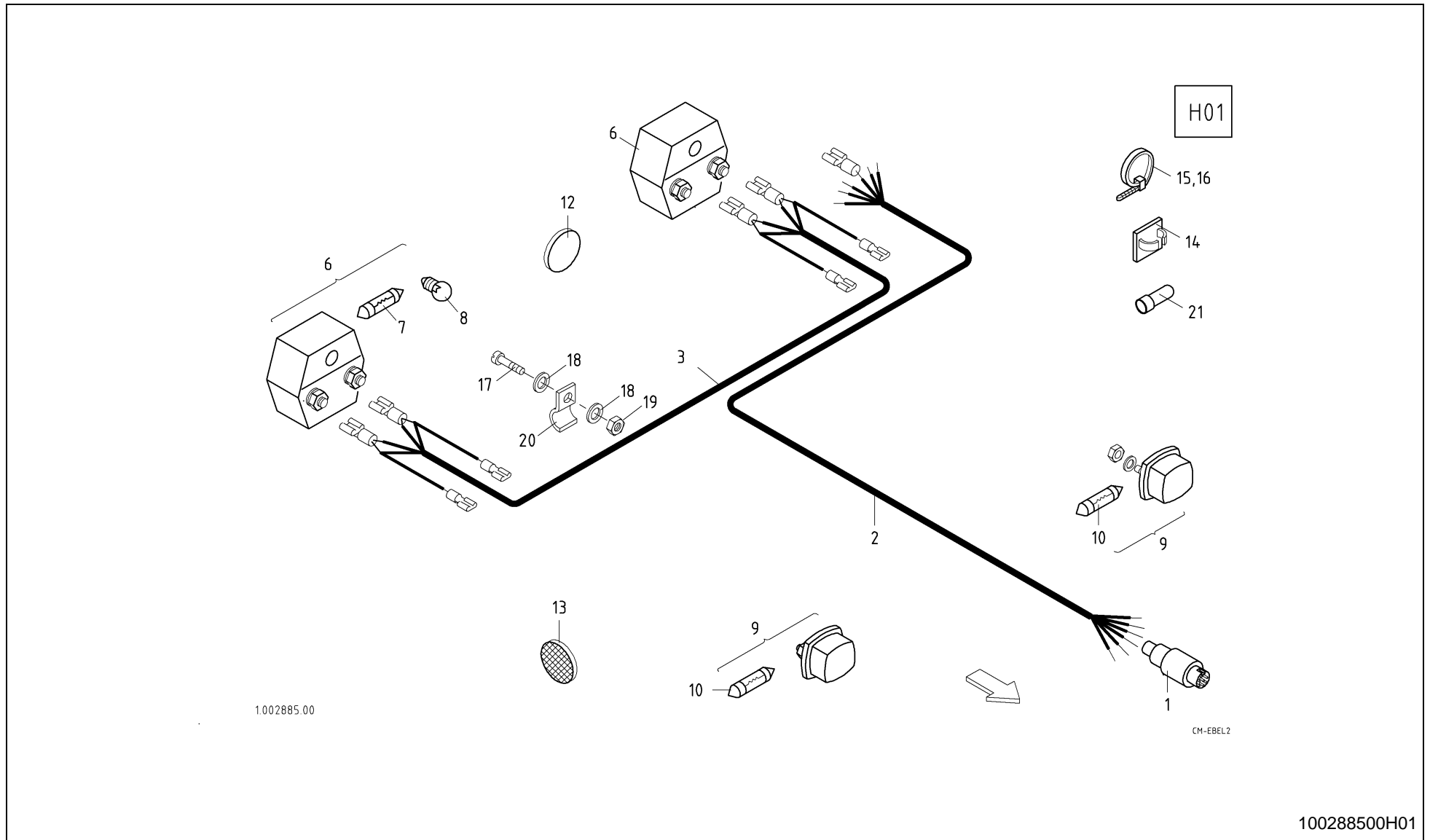




FANEX 833 T / DRAWBAR WITH ACCESS.

PosNo.	Part No.	Qty.	Description	Remark
1	VF01110784	1	CHEESE-HEAD SCREW	
2	VF01116029	2	CUP-SPRING	
3	VF01142830	1	DRAW SPRING	
4	VF01157399	1	DOWEL PIN	
6	VF01174923	4	WASHER, PLAIN	
7	VF06209975	1	PIN	
8	VF06214206	2	WASHER	
9	KG01267561	6	WASHER M12	
10	KG01267761	8	WASHER M16	
11	VF06214229	4	WASHER	
12	VF06215672	1	SAFETY SPRING	
13	VF06564445	1	SUPPORT	
14	VF06580435	1	GUIDE NUT	
15	VF06580436.86	1	SPINDLE NUT	
16	VF16605541	1	TENSION SPRING	
17	VF16609111	1	NIPPLE	
18	VF16621043	1	FIXING PIN	
19	VF16622823	1	EYE BOLT	
20	VF16623791.86	1	STRUT	
22	VF16640265.86	1	SUPPORT	
23	VF16640273.94	1	DRAWBAR	-385
23	VF16641172.94	1	DRAWBAR EXTENSION FOR FANEX 523 T	+386
24	VF16624176	1	SPINDLE	-789
24	VF16642259	1	SPINDEL DEICHELHYD. FANEX 833	+790
27	VF16642898.94	1	PLATE	
28	VF16640226.86	1	SUPPORT PLATE	-699
28	VF16643053.86	2	BEARING PLATE	+700
31	KG00337161	1	HEX. BOLT M12X55 10.9	
32	KG00476761	2	HEX. SCREW M12X40 8.8	
33	KG00480361	2	HEX. SCREW M16X45 8.8	
34	KG00480461	4	HEX. SCREW M16X50 8.8	
35	KG01052161	4	HEX. NUT M12 8	
36	KG01067761	4	LOCK NUT M12 8	
37	KG01067961	6	LOCK NUT M16 8	
38	VF06564448	1	CORD	
39	KG01192062	1	TENSION PIN 8X50	
40	KG01252661	2	SPLIT PIN 5X32 ST	

FANEX 833 T / lighting system





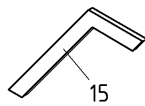
FANEX 833 T / lighting system

PosNo.	Part No.	Qty.	Description	Remark
1	VF01121327	1	PLUG SOCKET	X 2
2	VF16624991	1	CABLE	
3	VF16602652	1	WIRE/CABLE	
6	VF16600345	2	TAIL LIGHT	
6	VF16641492		SPARE GLASS	X 6
7	VF01121409	2	BULB	
8	VF01102550	2	BULB	
9	VF16641604	2	SIDE LIGHT	
9	VF16641491		SPARE GLASS	X 9
10	VF01121444	2	TUBE LAMP	
11	VF16602584	4	GUARD	
12	VF16623510	2	REAR REFLECTOR	
13	VF06214037	6	REAR REFLECT. YELLOW	
14	VF16613283	6	CABLE RETAINER	
15	VF06216479	14	CABLE BINDER	
16	VF16604765	10	CABLE CONNECTOR	
17	VF01105524	2	CHEESE HEAD SCREW	
18	VF01138092	4	WASHER/DISC/PLATE	
19	KG01067261	2	LOCK NUT M5	
20	VF06216397	2	FIXING CLIP	
21	VF16602585	10	CONNECTOR/UNION ARTIKELBEZ. L-RBI	

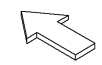
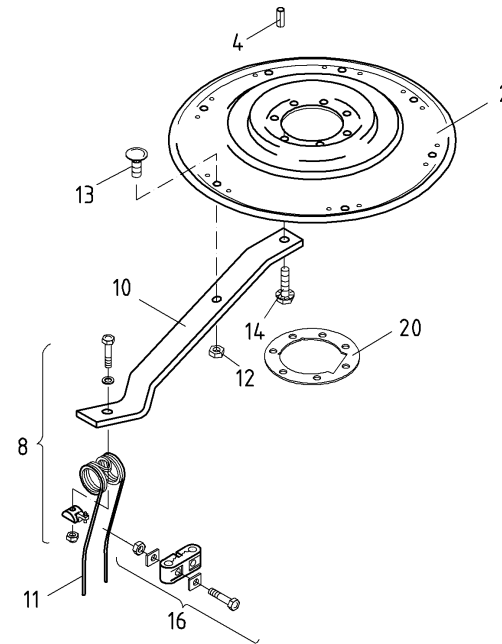
FANEX 833 T / rotary hub with arm



L01



1.002682.12



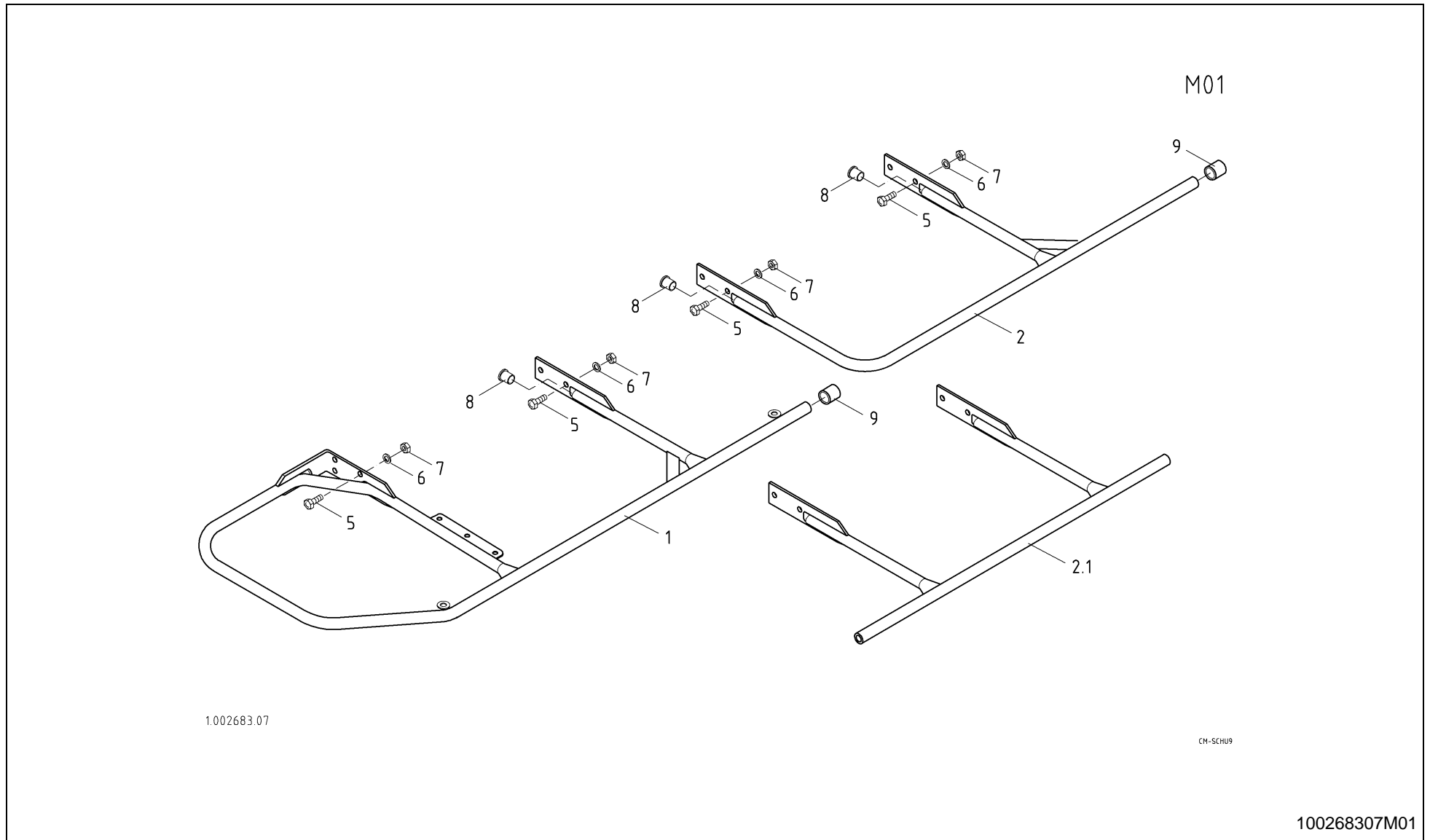
CM-KRSL7

100268212L01



FANEX 833 T / rotary hub with arm

PosNo.	Part No.	Qty.	Description	Remark
2	VF16607109.86	6	ROTATING PLATE	
4	VF01157355	6	DOWEL PIN	
8	VF06565744	42	TINE FIXING PIECE	
10	VF16607119.86	42	ROTARY STAR ARM	
11	VF16607564.86	42	SPRING TINE	
12	KG01068961	42	LOCK NUT M12 10	
13	VF16607787	42	SCREW	
14	VF06214155	42	TOOTHED SCREW	
15	VF06561506	1	SETTING GAUGE	
16	VF06565406	42	TINE SAFETY DEVICE	
20	VF16624763	6	RING	

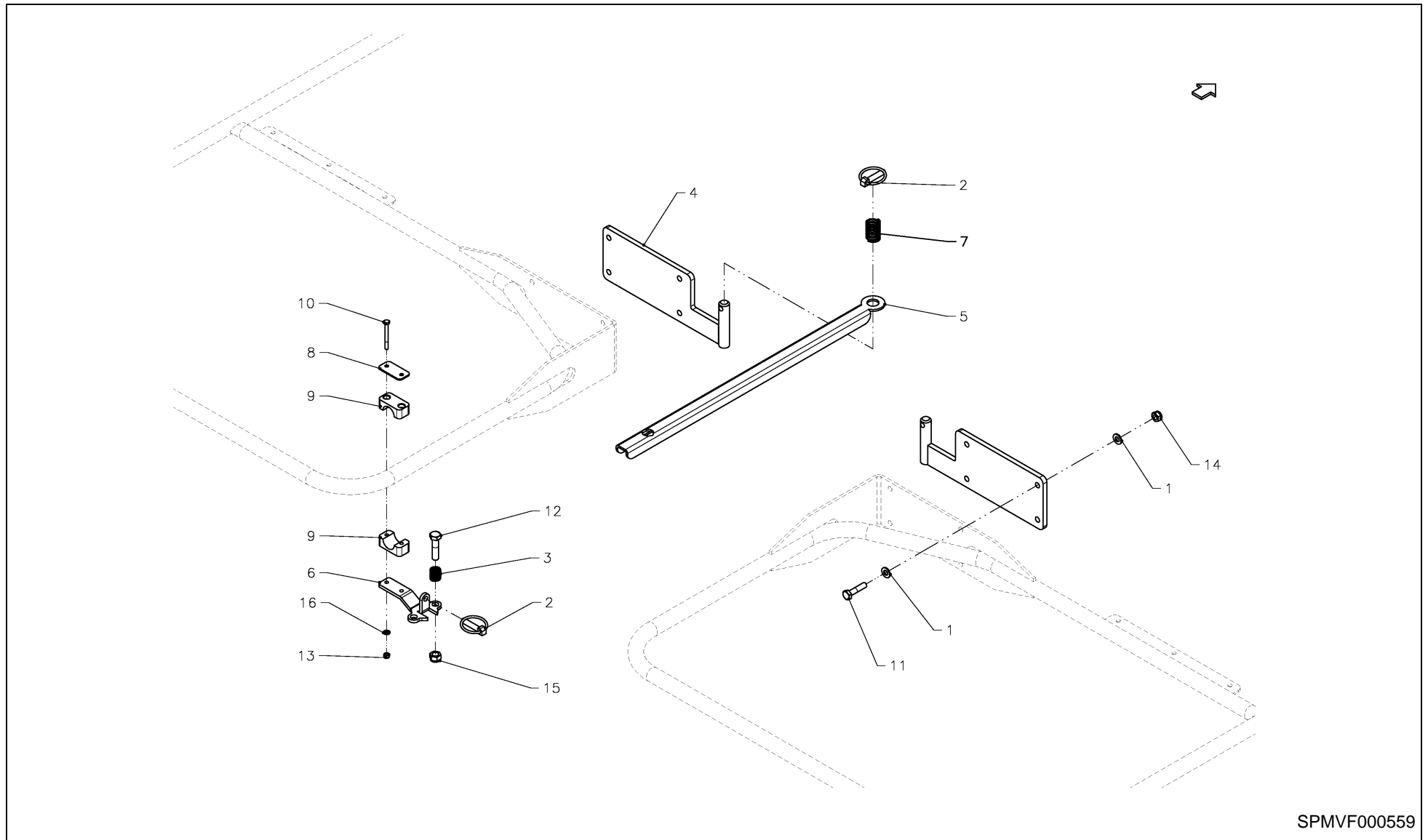




FANEX 833 T / protection device

PosNo.	Part No.	Qty.	Description	Remark
1	VF16622401.86	2	LATERAL GUARD	-305
1	VF16641453.86	2	LATERAL GUARD	+306
2	VF16640262.86	2	GUARD INSIDE	-305
2.1	VF16644323.86	2	COVER TUBE	+306
5	KG00474461	16	HEX. SCREW M10X35 8.8	
6	KG01267461	16	WASHER M10	
7	KG01067661	16	LOCK NUT M10 8	
8	VF16620256	6	PLUG	
9	VF16609767	6	CAP	

FANEX 833 T / protection bar (+1081)



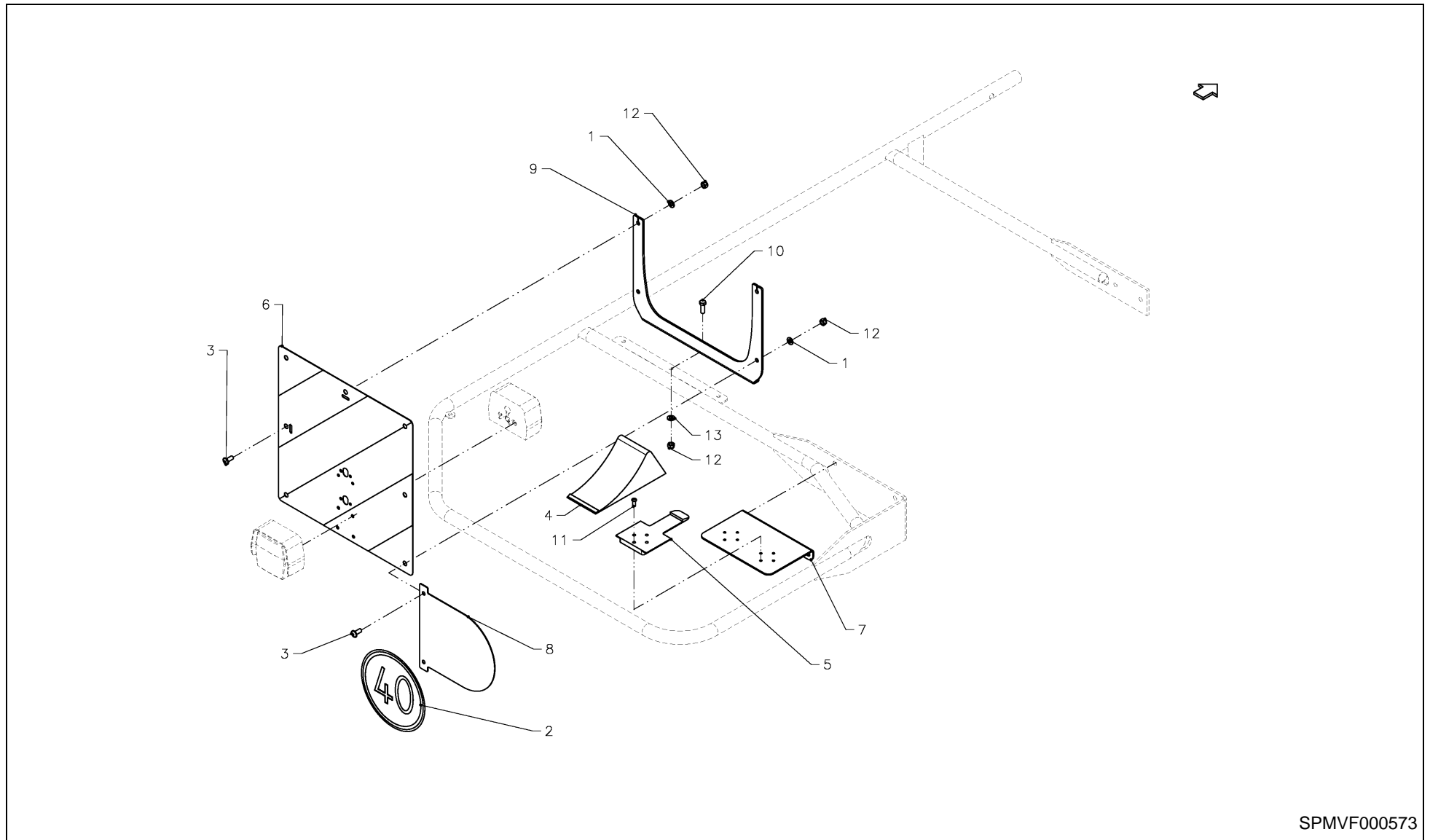
SPMVF000559

FANEX 833 T / protection bar (+1081)



PosNo.	Part No.	Qty.	Description	Remark
1	VF01107105	16	WASHER	
2	VF01397617	2	FOLDING PLUG	
3	VF06215289	1	COMPRESSION SPRING	
4	VF16644113.86	2	SUPPORT PLATE WELD	
5	VF16644194.86	1	JOINT ROD	
6	VF16644220.86	1	SUPPORT	
7	VF16644294	1	DRUCKFEDERVD269	
8	VF16650307	1	COVERING PLATE	
9	VF16650309	2	PIPE CLIP	
10	KG00351461	2	HEX. BOLT M6X60 8.8	
11	KG00355361	8	HEX. BOLT M10X45 8.8	
12	KG00357561	1	HEX. BOLT M12X50 8.8	
13	KG01067361	2	LOCK NUT M6 8	
14	KG01067661	8	LOCK NUT M10 8	
15	KG01067761	1	LOCK NUT M12 8	
16	KG01267261	2	WASHER M6	

FANEX 833 T / warning plate

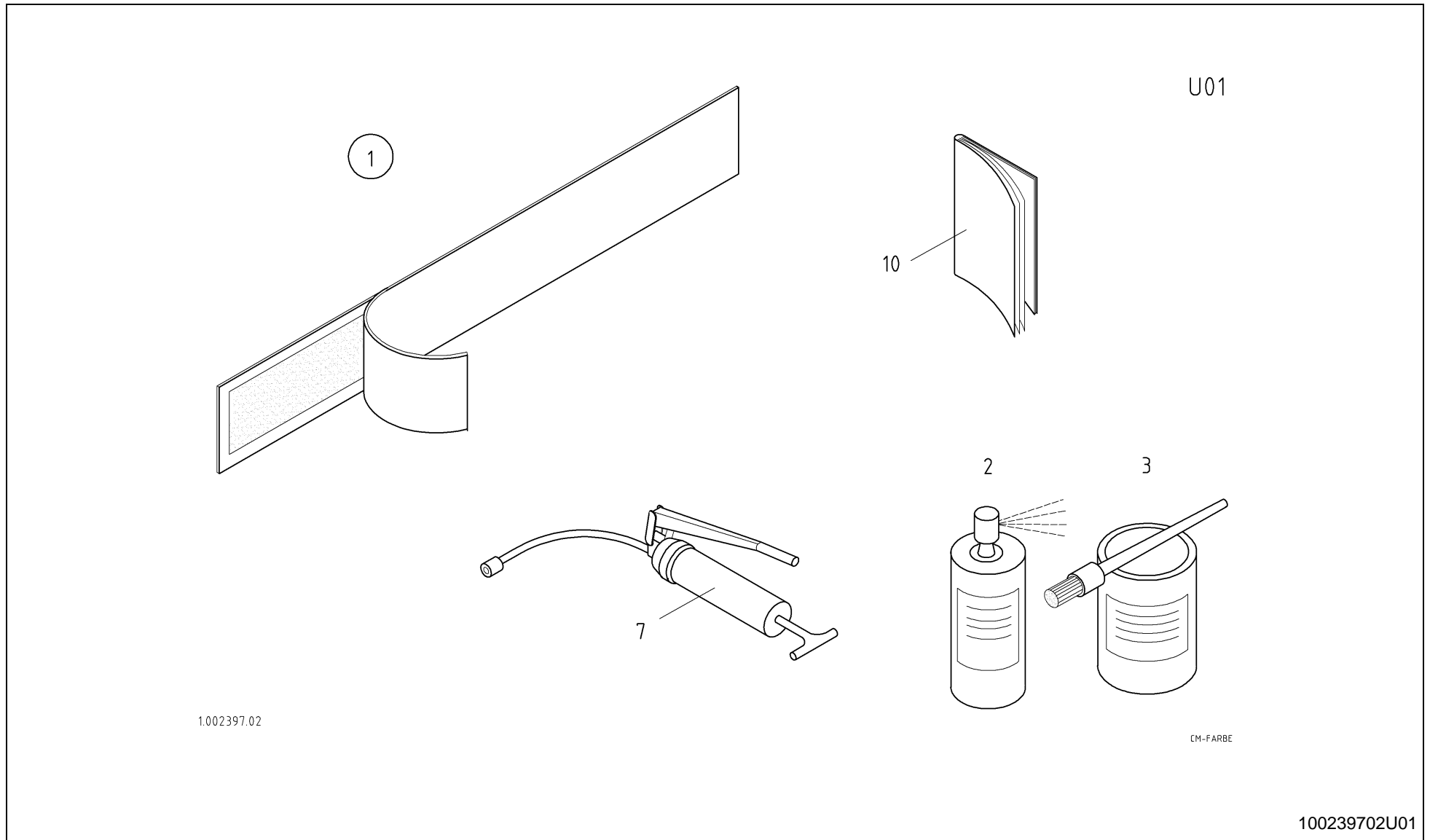


SPMVF000573



FANEX 833 T / warning plate

PosNo.	Part No.	Qty.	Description	Remark
1	VF01107163	18	WASHER	
2	VF01141381	1	MARKING PLATE	
3	VF01142565	8	TRUSS-HEAD SCREW	
4	VF16608181	2	BLOC	
5	VF16608182	2	RETAINER	
6	VF16620666	2	WARNING PLATE	
7	VF16641405	1	RETAINING PLATE	
8	VF16641444.86	1	PLATE	
9	VF16642393	2	WARNING PLATE RETAI.	
10	KG00472161	6	HEX. SCREW M8X25 8.8	
11	VF01397873	8	BLANK RIVET	
12	KG01067561	16	LOCK NUT M8 8	
13	KG01267361	1	WASHER M8	





FANEX 833 T / decal paint

PosNo.	Part No.	Qty.	Description	Remark
1	VF16640456.94	1	LABEL	
2	VF01008301	1	SILVER PAINT-SPRAY	
2	VF02953359.86	1	BLACK-GREY SPRAY	
2	VF02953361	1	RED PAINT-SPRAY RAL 3002 500ML	
2	VF16609647.94	1	RED PAINT-SPRAY	
3	VF01008346	1	PAINT SILVER	
3	VF02953358.86	1	PAINT BLACK-GREY	
3	VF02953360	1	PAINT RED 3002 0,75 LTR	
3	VF16609649.94	1	PAINT KVERNEL. RED	
7	VF06215179		GREASE GUN	
7	VF02953321		LUBRICANT	
7	VF06513515		LUBE HOSE	
10	VF16640459		OPERATION MANUAL 833T	

FANEX 833 T / Part No Index



Part No.	Page	Pos No	Part No.	Page	Pos No	Part No.	Page	Pos No	Part No.	Page	Pos No
KG00026600	2	4.1	KG00484361	20	37	KG01068161	20	38	KG01267361	27	13
KG00122100	2	2.1	KG00484861	19	25	KG01068961	24	12	KG01267461	18	27
KG00126400	2	3	KG00639261	13	16	KG01099000	3	2	KG01267461	25	6
KG00126400	2	3.1	KG00639261	14	17	KG01099100	13	19	KG01267561	17	17
KG00135800	2	5.1	KG00743163	7	52	KG01099300	13	20	KG01267561	20	10
KG00160200	1	2	KG00743163	8	52	KG01099700	20	19	KG01267561	21	5
KG00160600	2	2	KG00743163	10	52	KG01100100	19	6	KG01267561	22	9
KG00337161	22	31	KG00919000	13	17	KG01109362	5	7	KG01267761	15	6
KG00350161	18	20	KG00919000	14	18	KG01109362	6	7	KG01267761	19	10
KG00351161	17	55	KG01052161	5	13	KG01129800	5	8	KG01267761	22	10
KG00351461	26	10	KG01052161	6	13	KG01129800	6	8	KG01267961	17	25
KG00353361	17	30	KG01052161	22	35	KG01130500	12	9	KG01267961	17	46
KG00355361	26	11	KG01052500	19	24	KG01186262	13	1	KG01267961	20	39
KG00355661	18	21	KG01052500	20	44	KG01188162	17	24	KG01281561	17	58
KG00357561	26	12	KG01067261	18	23	KG01189062	5	15	KG01357900	5	10
KG00358661	20	9	KG01067261	23	19	KG01189062	6	15	KG01357900	6	10
KG00358661	21	4	KG01067361	5	14	KG01189662	15	13	KG01476400	16	8
KG00358761	20	33	KG01067361	6	14	KG01189862	17	14	VF01008301	28	2
KG00358861	20	30	KG01067361	17	57	KG01192062	22	39	VF01008346	28	3
KG00358961	21	7	KG01067361	26	13	KG01192162	14	20	VF01097625	20	50
KG00467061	18	22	KG01067561	13	18	KG01192462	15	8	VF01100388	9	3
KG00468961	6	11	KG01067561	14	19	KG01194162	17	11	VF01102550	23	8
KG00469161	5	12	KG01067561	17	31	KG01197762	18	25	VF01105524	23	17
KG00469261	6	12	KG01067561	27	12	KG01251561	15	7	VF01107105	26	1
KG00469461	5	11	KG01067661	18	24	KG01251561	18	26	VF01107158	5	18
KG00472161	27	10	KG01067661	25	7	KG01251561	20	48	VF01107158	6	18
KG00474461	25	5	KG01067661	26	14	KG01252661	20	43	VF01107163	27	1
KG00476261	17	18	KG01067761	16	9	KG01252661	22	40	VF01107850	11	2
KG00476761	22	32	KG01067761	22	36	KG01253861	20	35	VF01110784	22	1
KG00478661	13	15	KG01067761	26	15	KG01267261	17	56	VF01116029	22	2
KG00478661	14	16	KG01067961	15	12	KG01267261	26	16	VF01120693	11	11
KG00480361	22	33	KG01067961	19	11	KG01267361	13	21	VF01120693	13	2
KG00480461	22	34	KG01067961	22	37	KG01267361	14	21	VF01120693	14	1

FANEX 833 T / Part No Index



Part No.	Page	Pos No	Part No.	Page	Pos No	Part No.	Page	Pos No	Part No.	Page	Pos No
VF01120700	20	51	VF01397624	18	4	VF06214558	14	4	VF06580091	9	4
VF01121327	23	1	VF01397652	21	8	VF06214751	19	26	VF06580093	7	11
VF01121409	23	7	VF01397873	27	11	VF06215081	5	20	VF06580093	8	11
VF01121444	23	10	VF01397977	6	17	VF06215081	6	20	VF06580093	10	11
VF01128273	19	13	VF02953321	28	7	VF06215179	28	7	VF06580137	9	9
VF01133287	19	4	VF02953358.86	28	3	VF06215282	13	4	VF06580149	7	21
VF01137526	5	19	VF02953359.86	28	2	VF06215289	26	3	VF06580149	8	21
VF01137526	6	19	VF02953360	28	3	VF06215292	15	5	VF06580149	10	21
VF01138092	18	1	VF02953361	28	2	VF06215536	18	9	VF06580151	7	23
VF01138092	23	18	VF06209939	18	5	VF06215672	22	12	VF06580151	8	23
VF01138933	17	50	VF06209975	22	7	VF06216397	23	20	VF06580151	10	23
VF01138941	17	51	VF06210723	15	10	VF06216439	19	21	VF06580435	22	14
VF01138985	5	9	VF06212000	5	16	VF06216479	23	15	VF06580436.86	22	15
VF01138985	6	9	VF06212000	6	16	VF06216590	16	12	VF06580478	5	21
VF01139992	12	3	VF06213154	5	17.1	VF06216638	16	13	VF06580479	5	2
VF01141381	27	2	VF06213154	6	17.1	VF06229502	13	5	VF06580480	5	5
VF01141654	17	21	VF06213404	5	17	VF06243625	9	10	VF06580480	6	5
VF01141654	18	2	VF06214037	23	13	VF06249879	16	4	VF06580481	5	3
VF01142565	27	3	VF06214155	24	14	VF06513515	28	7	VF06580482	5	4
VF01142830	22	3	VF06214189	18	6	VF06561506	24	15	VF06580546	16	7
VF01157355	24	4	VF06214193	17	32	VF06563365	13	6	VF06581483	9	13
VF01157380	11	8	VF06214206	16	10	VF06564096	16	1	VF06581485	9	14
VF01157399	22	4	VF06214206	22	8	VF06564445	22	13	VF06581540	5	6
VF01157403	14	2	VF06214220	15	11	VF06564448	22	38	VF06581541	5	1
VF01168225	20	32	VF06214229	22	11	VF06564548	9	12	VF06581550	7	12
VF01168225	20	4	VF06214269	18	7	VF06565406	24	16	VF06581550	8	12
VF01172986	17	22	VF06214287	18	8	VF06565744	24	8	VF06581550	10	12
VF01172986	18	3	VF06214313	20	34	VF06567492	16	5	VF06581857	17	45
VF01173381	20	16	VF06214329	14	3	VF06569968	13	7	VF06582445	7	51
VF01174876	19	27	VF06214329	17	13	VF06580089	9	5	VF06582445	8	51
VF01174902	20	22	VF06214492	20	18	VF06580089	12	5	VF06582445	10	51
VF01174923	22	6	VF06214504	19	5	VF06580090	9	7	VF06584146	12	8
VF01397617	26	2	VF06214558	13	3	VF06580090	12	7	VF06584165	19	20

FANEX 833 T / Part No Index



Part No.	Page	Pos No	Part No.	Page	Pos No	Part No.	Page	Pos No	Part No.	Page	Pos No
VF06586630	7	55	VF16603725	17	48	VF16616074	12	11	VF16624176	22	24
VF06586630	8	55	VF16604641	17	26	VF16617533	18	11	VF16624763	24	20
VF06589732	10	55	VF16604765	17	27	VF16618217	17	28	VF16624900	7	4
VF16500123	12	2	VF16604765	23	16	VF16620206	20	17	VF16624900	8	4
VF16500124	12	4	VF16605541	22	16	VF16620256	25	8	VF16624901	7	5
VF16500125	12	10	VF16605580	16	2	VF16620666	27	6	VF16624901	8	5
VF16500126	11	5	VF16606146	9	16	VF16621043	22	18	VF16624902	7	13
VF16500126	12	12	VF16606165	1	3	VF16622113.86	2	1.1	VF16624902	8	13
VF16500127	11	6	VF16606585	15	9	VF16622121	19	23	VF16624902	9	1
VF16500127	12	13	VF16606738	10	4	VF16622121	20	3	VF16624902	10	13
VF16501744	17	52	VF16607109.86	24	2	VF16622401.86	25	1	VF16624903	7	25
VF16502426	17	34	VF16607119.86	24	10	VF16622598	16	2.2	VF16624903	8	25
VF16504075	7	54	VF16607327	3	3	VF16622823	22	19	VF16624904	7	26
VF16504075	8	54	VF16607331	18	10	VF16622958	7	27	VF16624904	8	26
VF16504075	10	54	VF16607333	18	28	VF16622958	8	27	VF16624904	11	4
VF16506111	9	8	VF16607410	17	53	VF16622996	2	4	VF16624905	17	1.1
VF16506134	11	3	VF16607564.86	24	11	VF16622997	2	5	VF16624905	17	5.1
VF16506780	17	43	VF16607787	24	13	VF16623032	19	16	VF16624983	4	3
VF16506818	17	20	VF16607908	21	9	VF16623072.86	1	1	VF16624984	4	2
VF16508300	6	21	VF16608181	27	4	VF16623075.86	2	1	VF16624985	11	9
VF16508549	6	4	VF16608182	27	5	VF16623510	23	12	VF16624987	17	7.1
VF16508810	6	3	VF16608451	4	6	VF16623512	13	9	VF16624991	23	2
VF16508811	6	2	VF16608469	13	8	VF16623512	14	6	VF16624993	10	5
VF16508813	6	6	VF16609111	22	17	VF16623515	13	10	VF16624995	10	25
VF16508814	6	22	VF16609190	17	23	VF16623515	14	7	VF16624996	10	26
VF16508816	6	1	VF16609482	15	4	VF16623537	20	21	VF16624996	11	1
VF16513608	9	6	VF16609647.94	28	2	VF16623541	19	22	VF16625102	10	12.1
VF16513608	12	6	VF16609649.94	28	3	VF16623542	20	20	VF16625103	10	11.1
VF16600345	23	6	VF16609767	14	5	VF16623712	18	12	VF16640161.94	21	1
VF16601691.86	19	9	VF16609767	25	9	VF16623744	18	13	VF16640172.94	21	2
VF16602584	23	11	VF16609814	21	10	VF16623791.86	22	20	VF16640190.94	19	2
VF16602585	23	21	VF16613283	23	14	VF16624050	3	6	VF16640191.94	19	3
VF16602652	23	3	VF16615171	17	3	VF16624133	20	15	VF16640207	19	17

FANEX 833 T / Part No Index



Part No.	Page	Pos No	Part No.	Page	Pos No	Part No.	Page	Pos No	Part No.	Page	Pos No
VF16640226.86	22	28	VF16641145	20	47	VF16642259	17	42	VG61.05.04	7	24
VF16640231.94	19	1	VF16641172.94	22	23	VF16642259	22	24	VG61.05.04	8	24
VF16640259.94	19	8	VF16641197	20	36	VF16642336.86	17	7	VG61.05.04	10	24
VF16640262.86	25	2	VF16641219	20	42	VF16642393	27	9	VG61.05.04	19	19
VF16640265.86	22	22	VF16641261	7	1	VF16642450.86	17	44	VG63.27.00	7	22
VF16640270.86	13	22	VF16641261	8	1	VF16642512.94	19	1	VG63.27.00	8	22
VF16640272.86	13	24	VF16641270	17	2	VF16642898.94	22	27	VG63.27.00	10	22
VF16640273.94	22	23	VF16641278.86	20	29	VF16643053.86	22	28	VG82.36.03	7	56
VF16640276.86	13	23	VF16641293.86	20	27	VF16643070	13	14	VG82.36.03	8	56
VF16640283	3	4	VF16641293.86	20	41	VF16643070	14	15	VG82.36.03	10	56
VF16640284	3	10	VF16641295.86	20	26	VF16643116	16	11	VG82.85.00	7	53
VF16640285	3	5	VF16641295.86	20	41	VF16643230	17	19	VG82.85.00	8	53
VF16640384	21	3	VF16641309.86	13	11	VF16643640	19	18	VG82.85.00	10	53
VF16640394	3	7	VF16641309.86	14	12	VF16643683.61	18	19	VGND9813V	12	15
VF16640443	17	4	VF16641310.86	13	12	VF16643708	3	1			
VF16640456.94	28	1	VF16641310.86	14	13	VF16643857	17	44			
VF16640459	28	10	VF16641405	27	7	VF16643858	17	41			
VF16640834.94	21	6	VF16641444.86	27	8	VF16643859	17	47			
VF16641026.86	14	8	VF16641447	14	14	VF16643860	17	49			
VF16641027.86	14	9	VF16641447.86	13	13	VF16644113.86	26	4			
VF16641074.86	14	10	VF16641453.86	25	1	VF16644194.86	26	5			
VF16641086	20	46	VF16641491	23	9	VF16644220.86	26	6			
VF16641095	17	1	VF16641492	23	6	VF16644294	26	7			
VF16641104.86	15	2	VF16641502.86	17	5	VF16644323.86	25	2.1			
VF16641105	18	14	VF16641514	18	16	VF16644488	17	16			
VF16641105.86	15	1	VF16641517	18	17	VF16644549	19	12			
VF16641107.86	15	3	VF16641528	18	18	VF16644586	17	54			
VF16641111	20	31	VF16641586	3	6	VF16650133	17	29			
VF16641130	17	12	VF16641586	4	1	VF16650225	20	28			
VF16641132.94	20	2	VF16641604	23	9	VF16650307	26	8			
VF16641133	20	45	VF16641815	10	1	VF16650309	26	9			
VF16641134.94	20	1	VF16642167	2	6	VG21.31.56	12	14			
VF16641135.86	14	11	VF16642258.86	17	41	VG56.141.40	12	1			



FANEX 833 T

0171 < Mach. ID <=

Kverneland Gottmadingen N.V.
Industriepark 312
D- 78244 Gottmadingen
Germany
+49(0)7731-788-0
+49(0)7731-788-355

© Kverneland Group

All rights reserved. No parts of this book may be reproduced, stored in a database or retrieval system, or published in any form or in any way, electronically, mechanically, optically, by print, photo print, microfilm (including micro and macro fiche), or any other means, including all video and CD systems, without prior written permission from the publisher.

Print date: 2008-02-06

